

CT100 Series

CT-Works Instruction

Last Modified 2013-06-13

- Table of contents -

1. Install	4
1.1. Using this manual	4
1.2. How to install	4
1.2.1. Preparing to install.....	4
1.2.2. Input customer information.....	6
1.2.3. Finishing installation.....	8
1.2.4. Operation	9
2. Setting Configuration	10
2.1. Scale Configuration	10
2.1.1. Scale Tab Explanation.....	10
2.2. Setting File Path.....	11
2.2.1. Path Tab Explanation	12
2.3. Field Select (PLU Field Configuration)	12
2.3.1. Field Select Tab Explanation	13
2.4. Communication Configuration	13
2.4.1. Setting Communication Devices.....	14
2.4.2. Communication Explanation	15
2.5. Store Configuration	17
2.5.1. Store Configuration Explanation.....	17
2.6. Scale Setting Configuration	18
2.6.1. Scale Setting Explanation	18
3. PLU editor	19
3.1. Basics of PLU editor.....	19
3.2. Components of PLU editor.....	19
3.2.1. Field explanation.....	19
3.3. Programing PLU editor.....	20
3.3.1. Opening new work in PLU editor	20
3.3.2. Add & Edit in PLU Editor.....	20
3.3.3. Save & open PLU data	21
3.3.4. Saving Data	21
3.3.5. Excel File Import.....	22
3.3.6. Text File Import	24
3.3.7. Dealing with Enter in PLU Editor	24
3.3.8. Searching Data.....	24
3.3.9. Uploading PLU	24
3.3.10. Downloading PLU	24
3.3.11. Deleteing PLU	25
4. Data Table 1	26
4.1. Data Table 1 formation	26
4.1.1. Table 1 Explanation	26
4.2. Data Table 1 instruction	27
4.2.1. Starting new work	27
4.2.2. Edit & Add	28
4.2.3. Save data	28
4.2.4. Searching data	28
4.2.5. Delete data	28
4.2.6. Upload data	29
4.2.7. Download	29
4.3. Assist information on Data Table 1	29
4.3.1. Input filed table.....	29
4.3.2. Precautions	29
5. Store Data (PLU assist information III).....	37
5.1. Store data formation	31

5.1.1. Explanation and name	31
5.2. Store Data instruction.....	32
5.2.1. Starting a new work	32
5.2.2. Edit & Add	32
5.2.3. Save	33
5.2.4. Delete	33
5.2.5. Upload data	33
5.2.6. Download data	33
5.3. Store Data assist information	34
5.3.1. Property table	34
5.3.2. Precautions	34
6. Report.....	35
6.1. Outline	35
6.2. Formation	35
6.2.1. Names and Explanation	36
6.3. Instruction	37
6.3.1. Start seeing report.....	37
6.3.2. Edit view report	39
6.3.3. Save view report	39
6.3.4. Upload data	39
6.3.5. Download data	40
6.4. View Report reference	40
6.4.1. Input property table.....	40
7. Receipt.....	43
7.1. Outline	43
7.2. Formation	43
7.2.1. Explanation.....	43
7.3. Add Image Item.....	44
7.3.1. Add Image Item	44
7.3.2. Caution	46
8. Keypad.....	47
8.1. Outline	47
8.2. Formation	47
8.2.1. Explanation.....	47
8.2.2. Edit print screen	48
8.2.3. Edit speed key	49
8.2.4. Make new file	49
8.2.5. Save data	49
8.2.6. Delete file	50
8.2.7. Upload data	50
8.2.8. Download data	50

1. Install

1.1. Using this manual

This manual explains how to install and start CT-Works PC program.

This Program works with CT100 series scale through Ethernet and RS232c protocol.

CT-Works utilize the scale management.

1.2. How to install

Insert CT-Works CD, It will install automatically. If it is not working properly, go into CD directory and double-click on setup file. See <Image 1-1 Content of CD-Rom> down below.

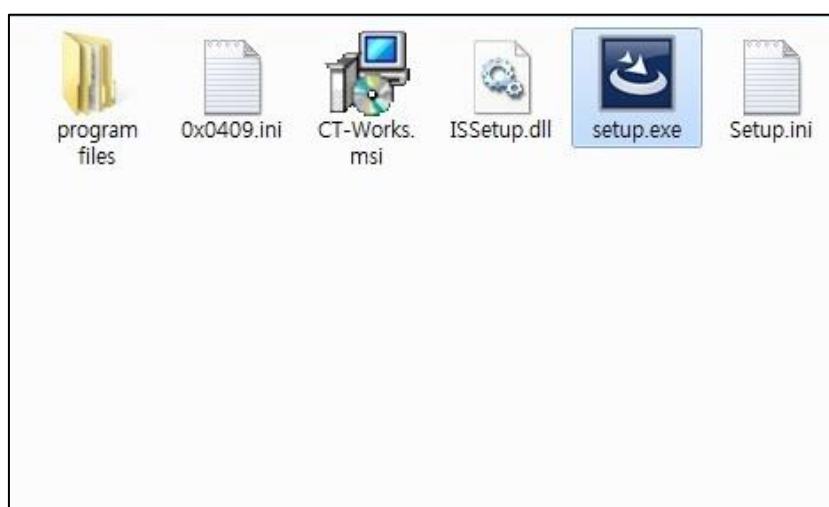


Image 1-1 Content of CD-ROM

1.2.1. Preparing to install

When you insert CD or double-click on Setup file, it will starts copying necessary files and prepares to install the CT-Works program.

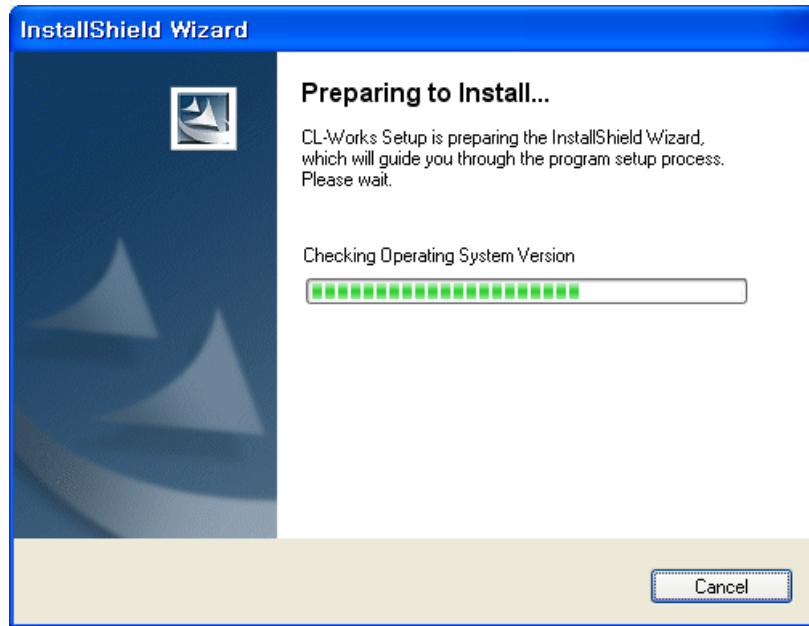


Image 1-2 Preparing to install

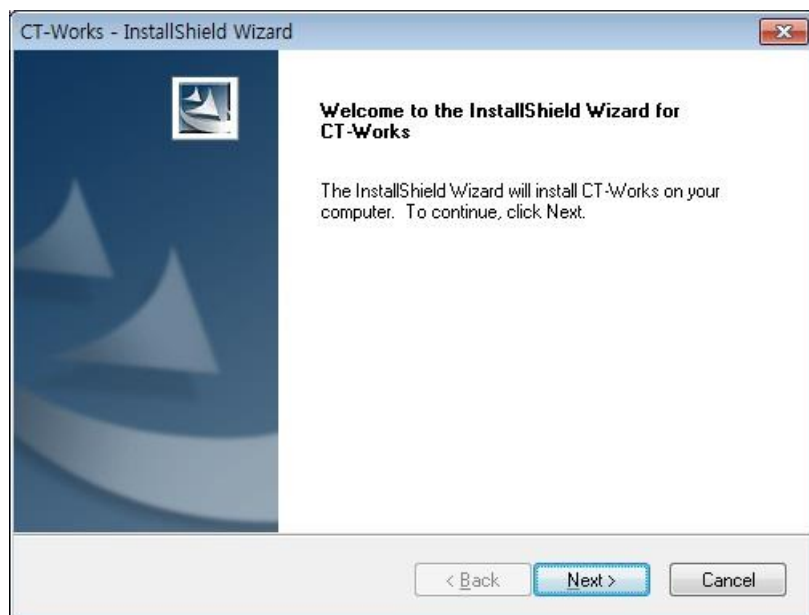


Image 1-3 Guidance

1.2.2. Input customer information

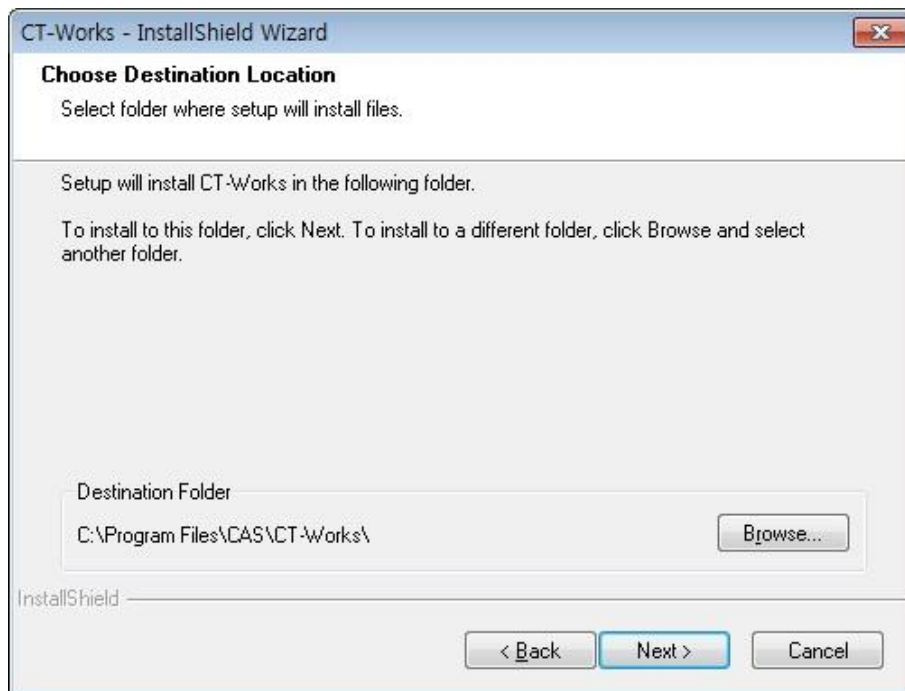


Image 1-4 Choose destination folder

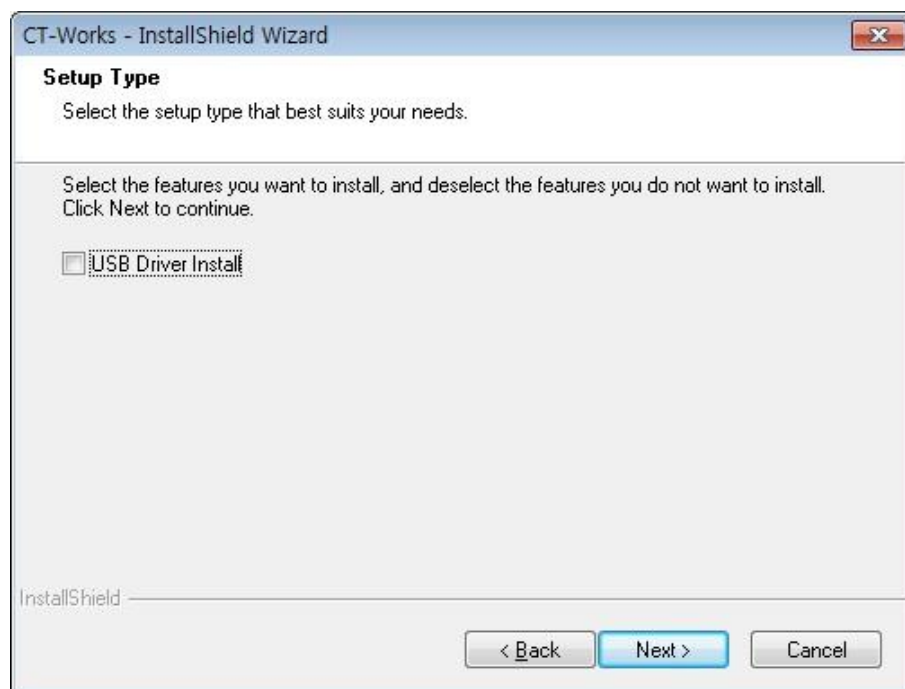


Image 1-5 Setup Type
Check USB Driver Install to use USB connector

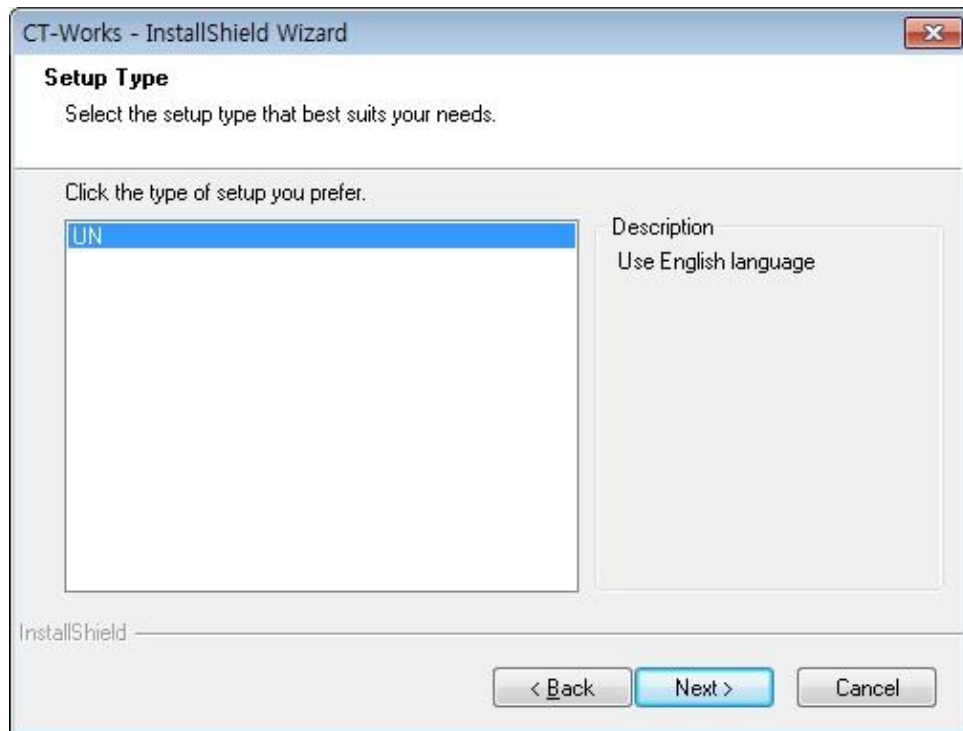


Image 1-6 Choose language

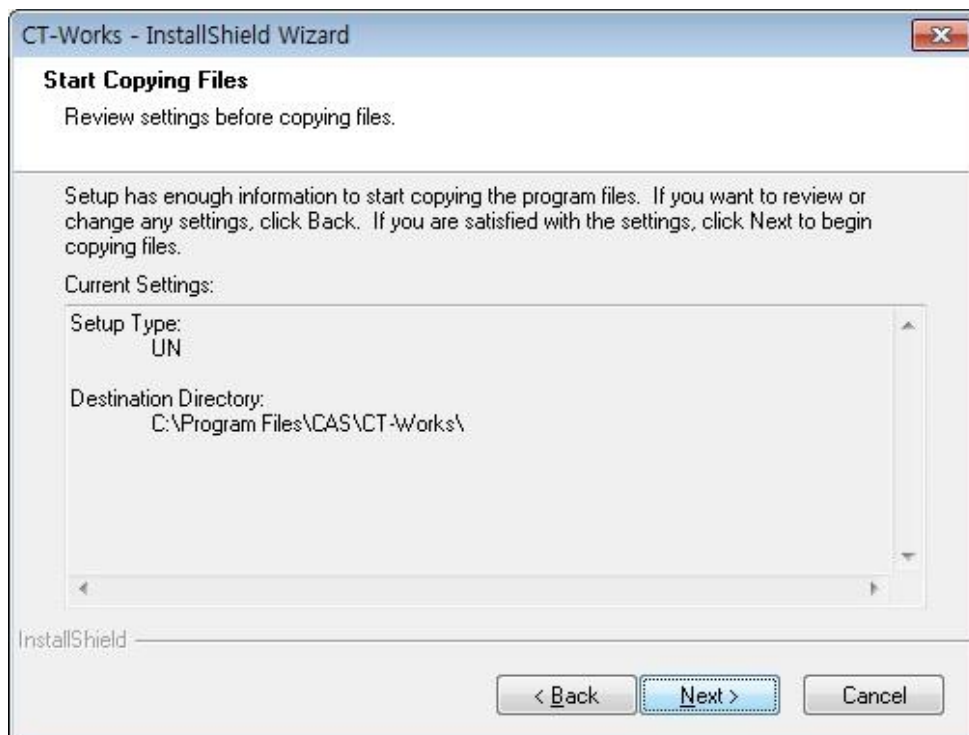


Image 1-7 Confirm choice

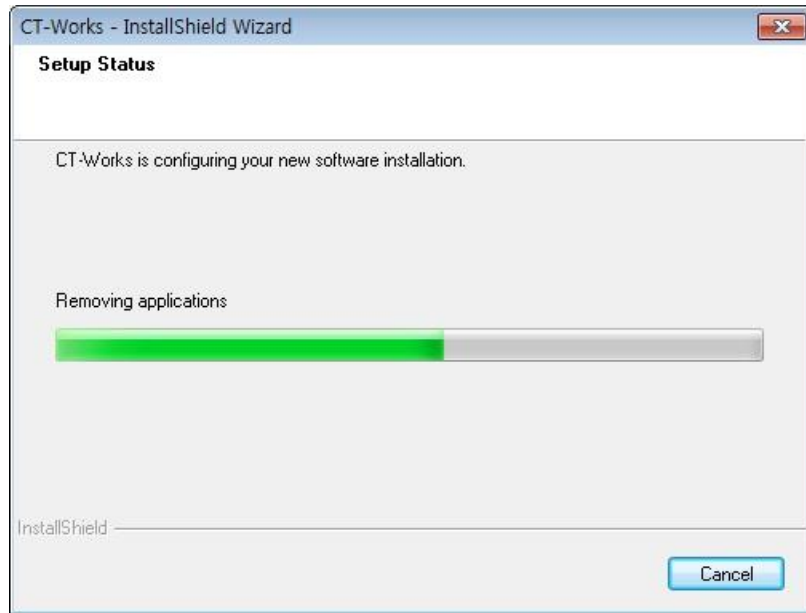


Image 1-8 Copying program

It begins to copy program, modules and basic components. After copy the program, it will automatically register the program to the windows; it makes CT-Works Shortcut on desktop and starting program.

1.2.3. Finishing installation

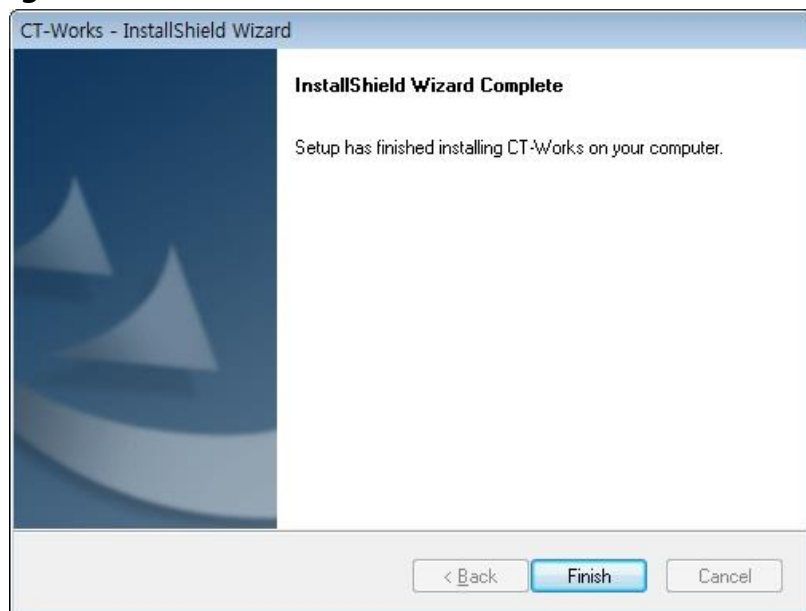


Image 1-9 Install finish

Click finish button to complete installing. Use shortcut on desktop or shortcut icon on the folder to start.

NOTE: Some of the windows versions like Windows 95 need to restart the computer.

1.2.4. Operation

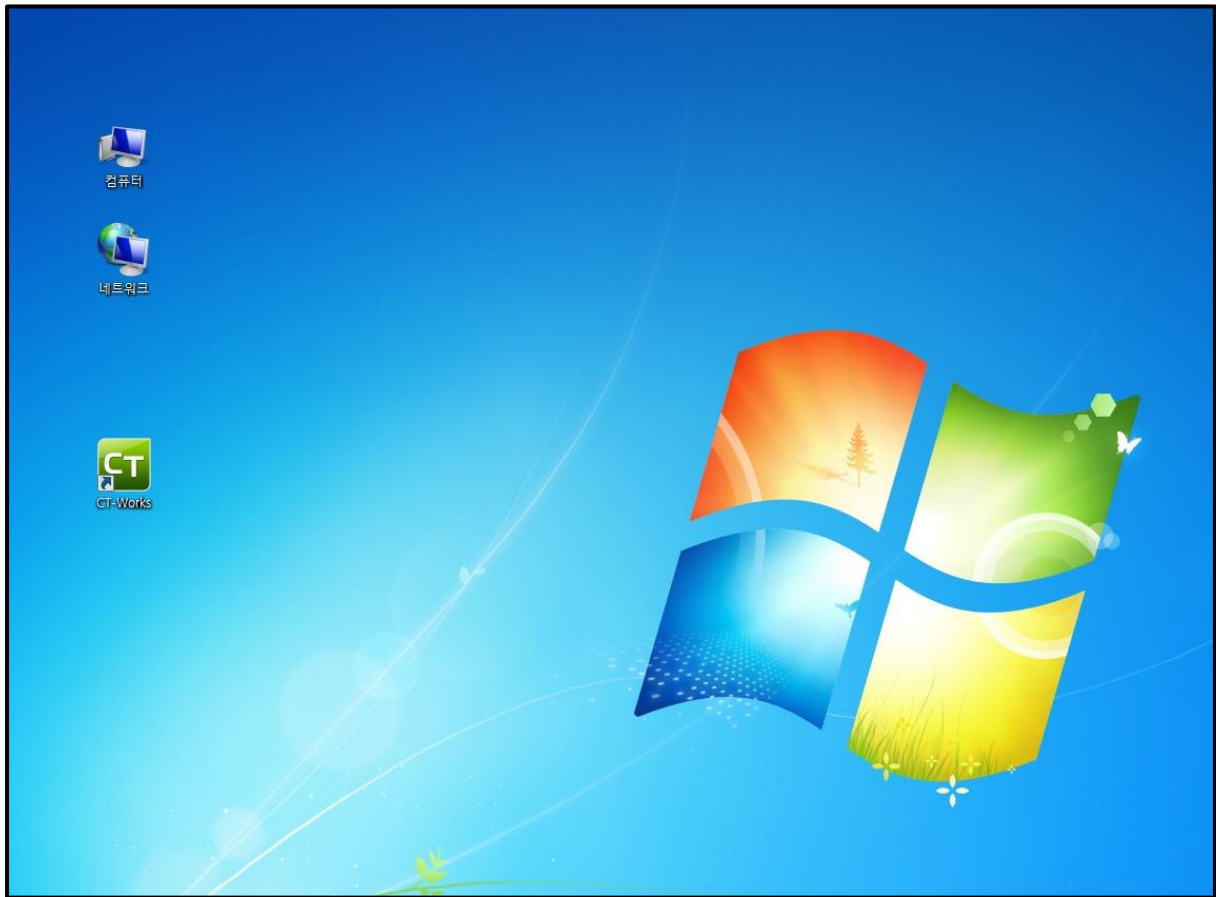


Image 1-10 Starting program

When install is successfully finished, you can find CT-Works folder and shortcut icon in both windows starting program and desktop <Image 1-10 Starting program>. Click on shortcut icon to start your program.

2. Setting Configuration

Use this program properly; you need to go over basic setting processes.

Skipping this process may have some trouble to communicate with the scale. Please check communication before use.

2.1. Scale Configuration

- Scale configuration in "Setting" tab shows scale information on PC.
- This configuration set basic function of price, weight, decimal point, date, font size and currency sign of the scale.
- It use to set basic configuration like capacity of scale or unit of weight

Basic form is down below <Image 2-1>

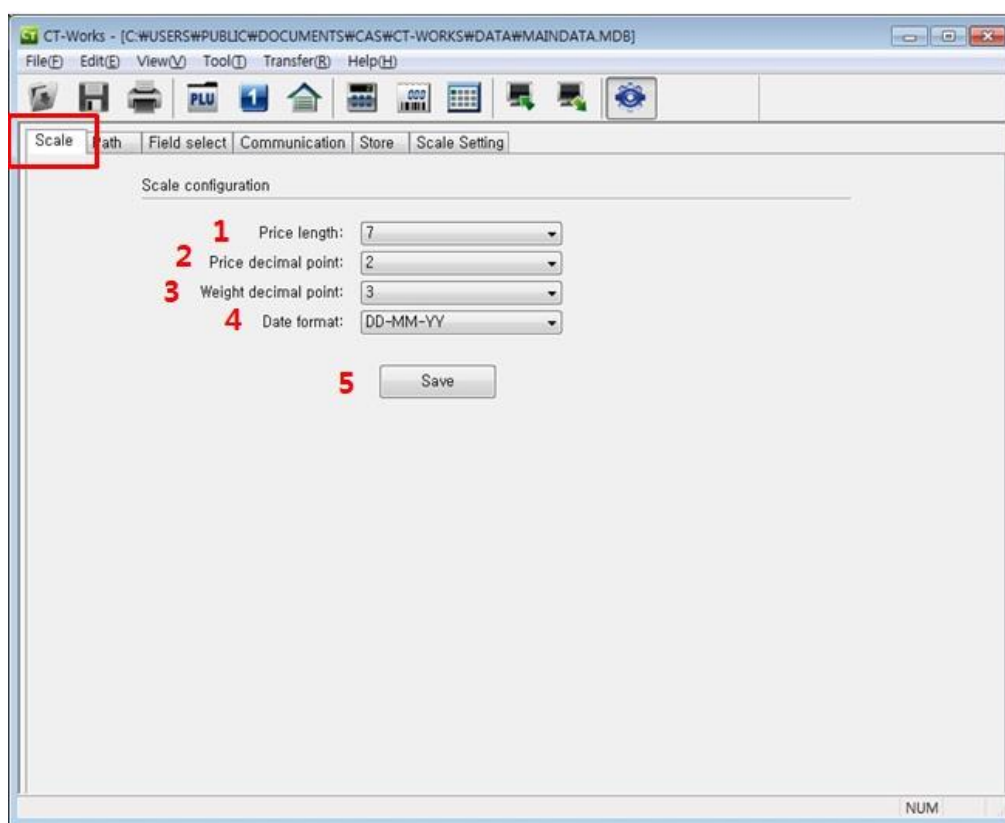


Image 2-1 Configuration Scale Tab

2.1.1. Scale Tab Explanation

1. Price Length: (choose one on 6,7,8,9) when you put data related to price, maximum value will decide according to this setting
If Price Length is seven, the maximum value price is 9999999
2. Price Decimal Point: It sets price decimal point. Choose one among 0,1,2,3

- If price decimal point is two, the result comes out like 123.45
3. Weight Decimal Point: It sets weight decimal point. Choose among 0,1,2,3
If weight decimal point is three, the result comes out like 34.123
 4. Date Format: It decides order of year, month, date
17th February, 2005 can indicate down below
 - In case of YY-MM-DD: 05-02-17
 - In case of MM-DD-YY: 02-17-05
 - In case of DD-MM-YY: 17-02-05
 5. Save button : Click to save and apply the edited data
"Save Complete" message will appear when it works right

2.2. Setting file path

Path tab is use to appoint file location use on each program

When each program starts, it brings up file from set up in Path tab

Basic form of <Image 2-2> is down below.

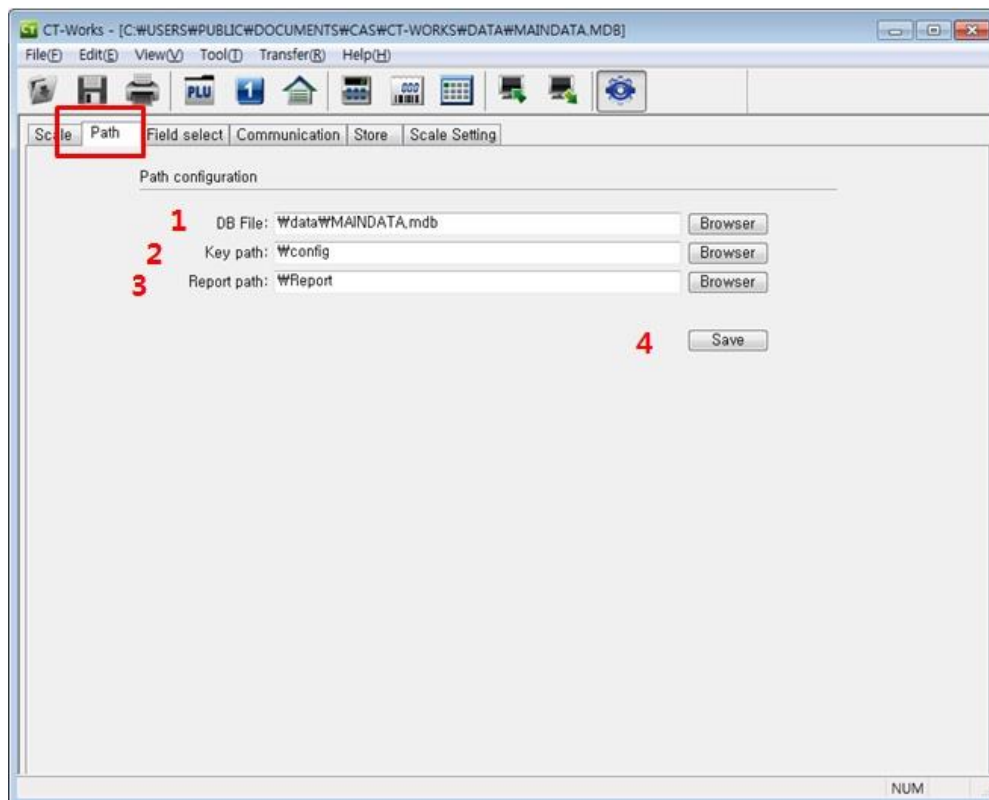


Image 2-2 setting path

This is for setting path of saving basic data use in program. File and path is set to the installed location. It can use by basic setting and Data file for more detail.

2.2.1. Path Tab Explanation

1. DB File (1): Set up data file location
This data file has the data use on each program. Register, edit, delete and start program process are using this file. Be careful to decide the file location.
2. Key Path (2): Sets key file folder on keypad program
Key file is information of the key & key path is folder location of the key file
3. Report Path (3): It sets Report folder location which use on Report Program

2.3. Field Select (PLU Field Configuration)

Filed Select Tab uses to set up Field on PLU Editor Program

See <Image 2-3> down below.

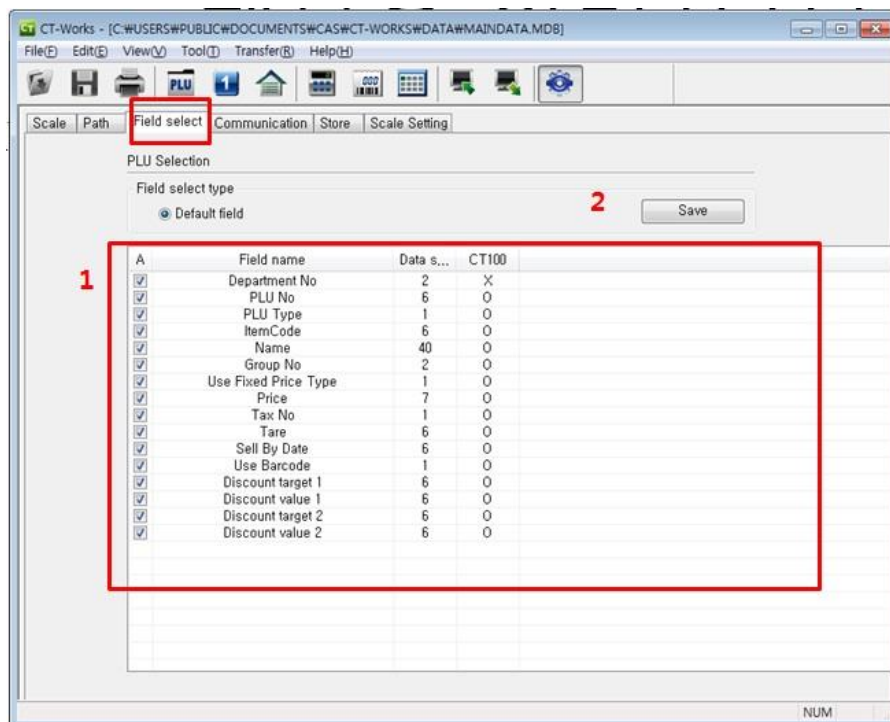


Image 2-3 Field selection

Filed Select Tab uses to set up Field on PLU Editor Program

Select the PLU fields which will list up on< Image 2-3>. You can click field select to see and can use with basic setting. More details for <3.PLU editor>.

2.3.1. Field Select Tab Explanation

1. Field List (1): It shows field list
2. Save button (2): To save and apply the edited contents

2.4. Communication Configuration

Communication Tab is use to set up basic configurations which need to communicate with the scale. It formed like < Image 2-4>

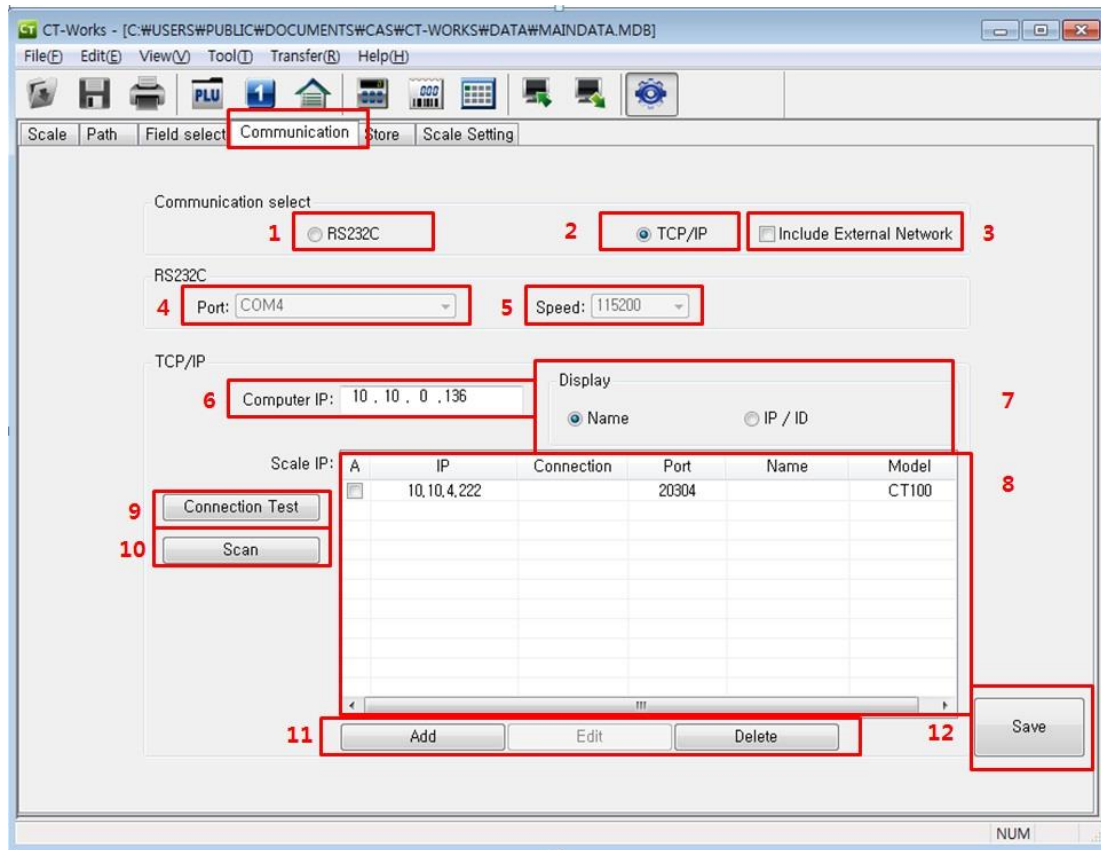


Image 2-4 Setting Communication

2.4.1. Setting communication Devices

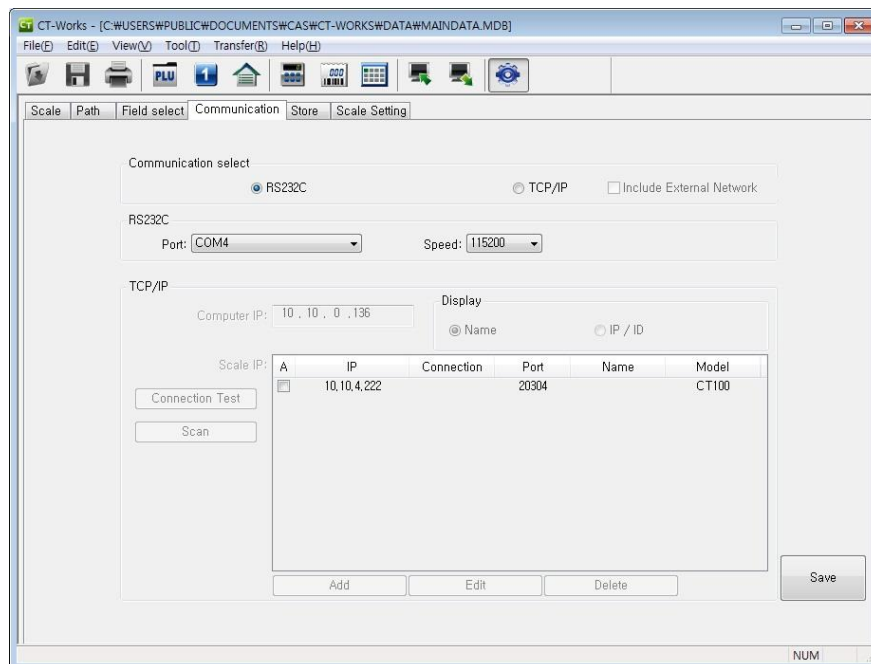


Image 2-5 Setting communication (RS232C)

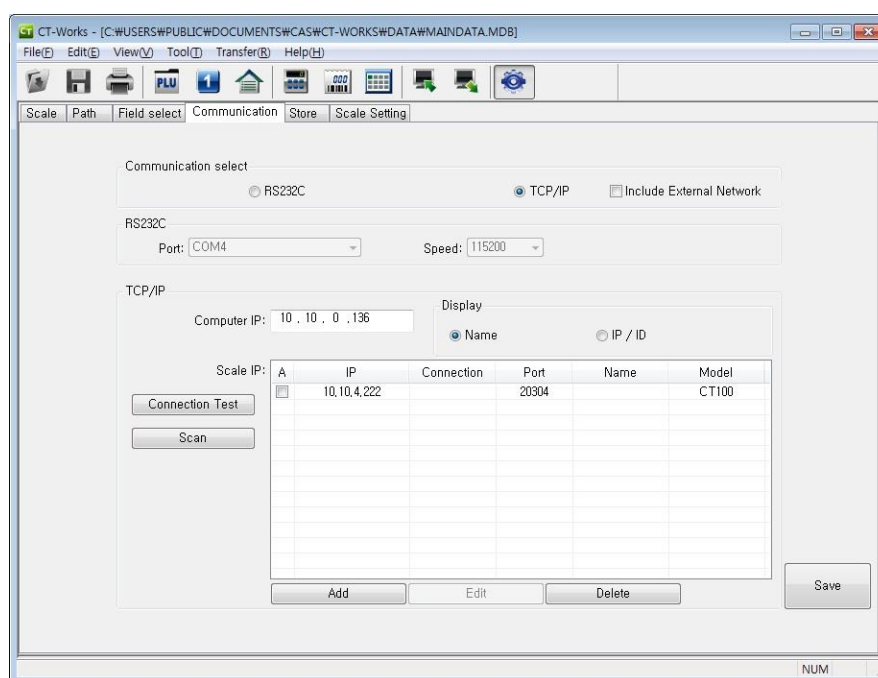


Image 2-6 Setting communication (TCP/IP)

Click on configuration toolbar and choose communication you can see on <Image 2-1 Setting communication>. Select TCP/IP (Ethernet cable) or RS232c (Serial cable)

2.4.2. Communication Explanation

1. RS232C (1): It is used to upload or download data using RS232C communication by checking, <RS232C> group will active and able to input data
 2. TCP/IP (2): It is used to upload or download data using TCP/IP communication by checking, <TCP/IP> group will active and able to input data
 3. Include External Network (3): It is used to composite Port forwarding type's network while using internal network.
 4. Port (4): It is used to set up comport for RS232C
 5. Speed (5): It is used to set up communication speed for RS232C
 6. Computer IP (6): It shows IP of current computer which CT-Works is in working.
 7. Display (7): It is used to set up the scale indication mode to whether it's IP or name.
 - Set by IP / ID: It is displayed as <Image 2-7> section 1
 - Set by Name: It is displayed as <Image 2-8> section 1(It is necessary to input name to the 'Name' field in section 8)
 8. Scale List (8): It shows address list of scale need to communicate with
 9. Connection Test button (9): It is used for connection test between PC and scales listed
 10. Scan button (10): It is used to find scales connected with PC
 11. Add, Edit, Delete button (11): Add, edit, delete scale address list
 12. Save button (12): It is used to save set up contents
- If communication mode is changed, "Must be restart" message will appear and you must restart the program

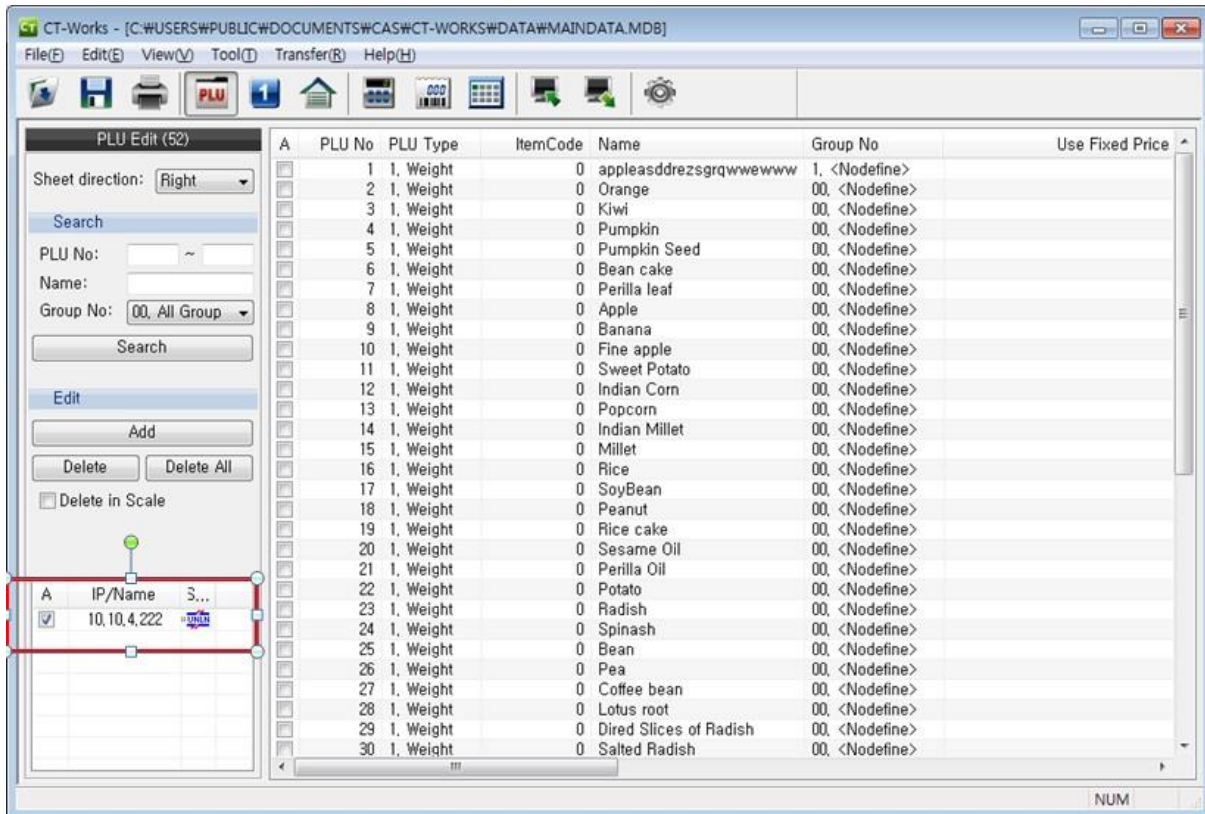


Image 2-7 IP/Name on PLU (IP)

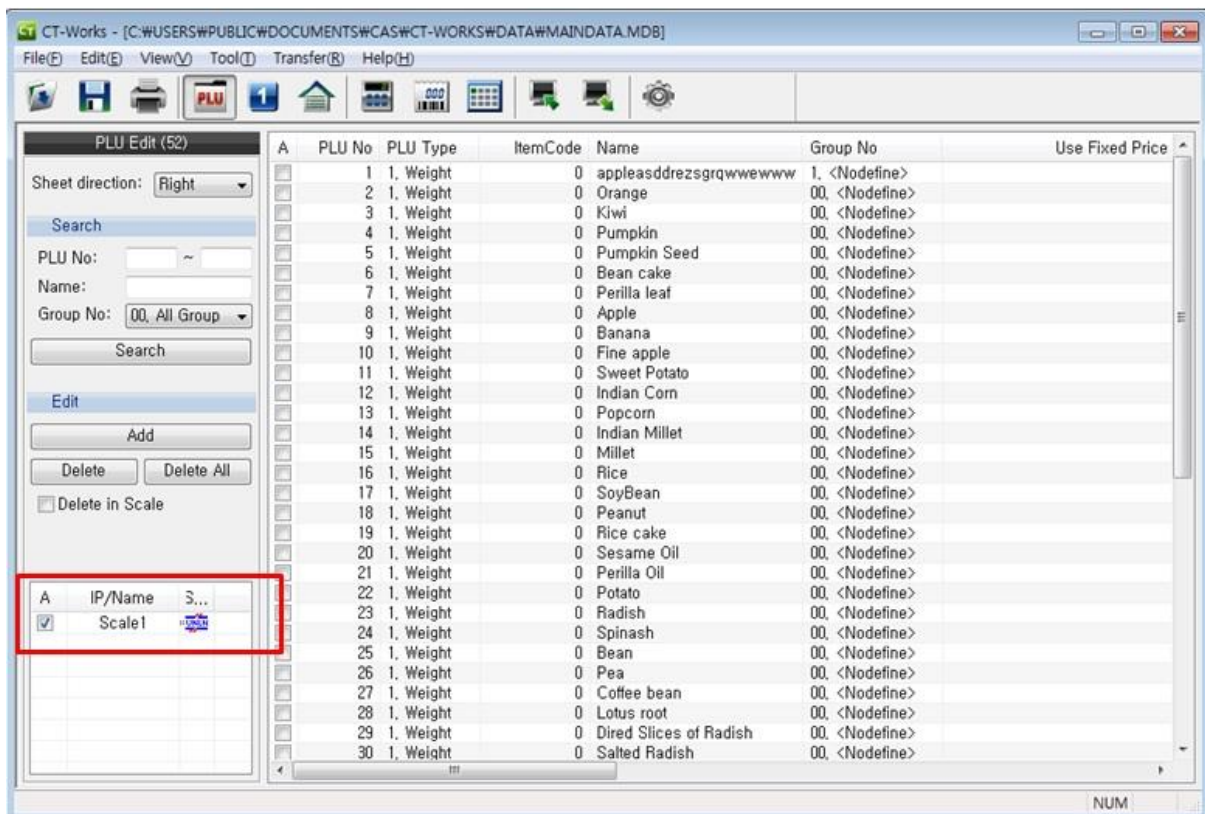


Image 2-8 IP/Name on PLU (Name)

2.5. Store Configuration

This tab is based on the Port Forwarding function. Port Forwarding function uses several ports in one IP address on the scale.

NOTE: This function only activate in the situation of port forwarding

It formed like <Image 2-9>

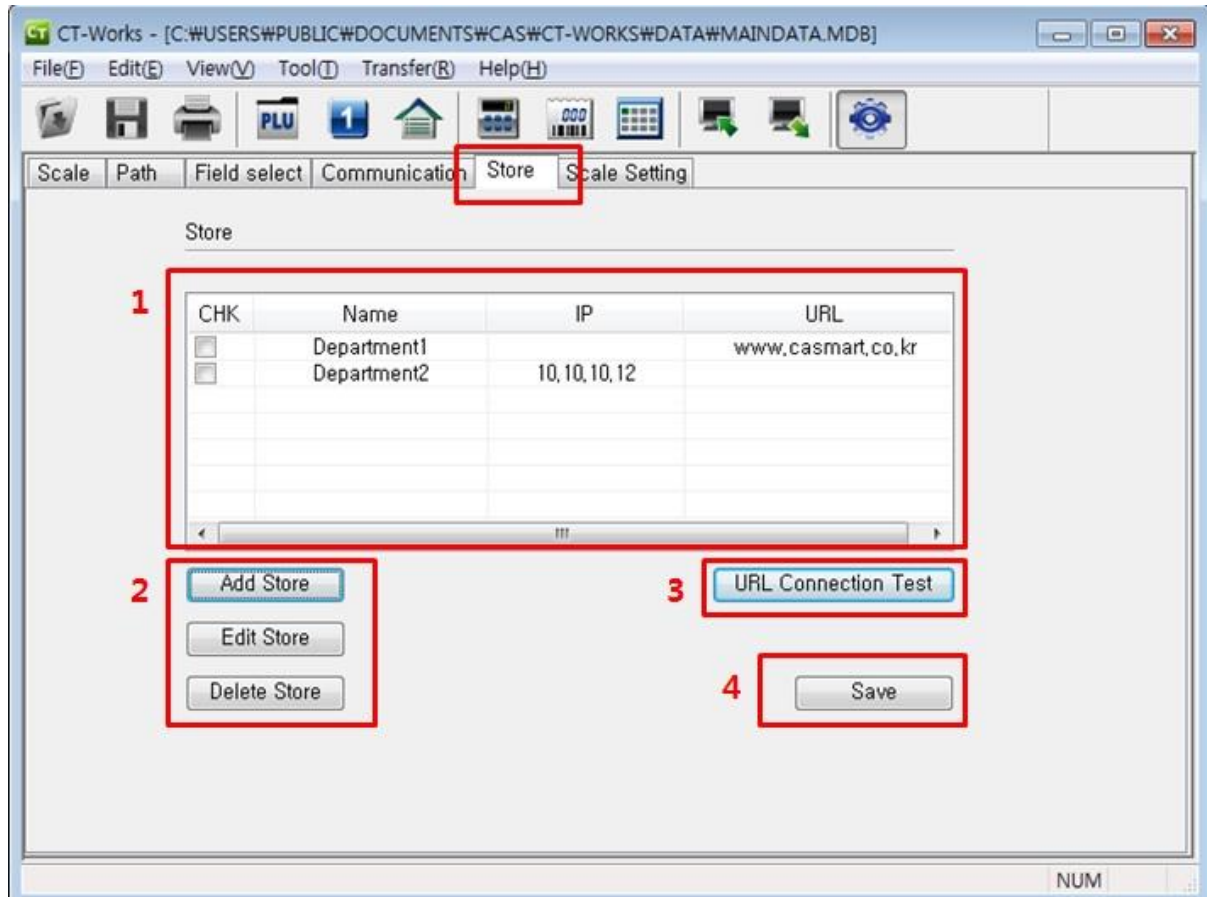


Image 2-9 Setting Port Forwarding Function on Store tab

2.5.1. Store tab explanation

1. Store List

It shows the information of current set-up shop

2. Add / Edit / Delete

- Add: This button add the information of shop network.
- Edit: This button edit the information of shop network.
- Delete: It delete the information of shop network.

3. URL connection test

This button tests the status of URL connection.

4. Save

This button save the current store information

2.6. Scale Setting Configuration

Scale setting tab set the basic scale environment

Image formed like <Image 2-10>

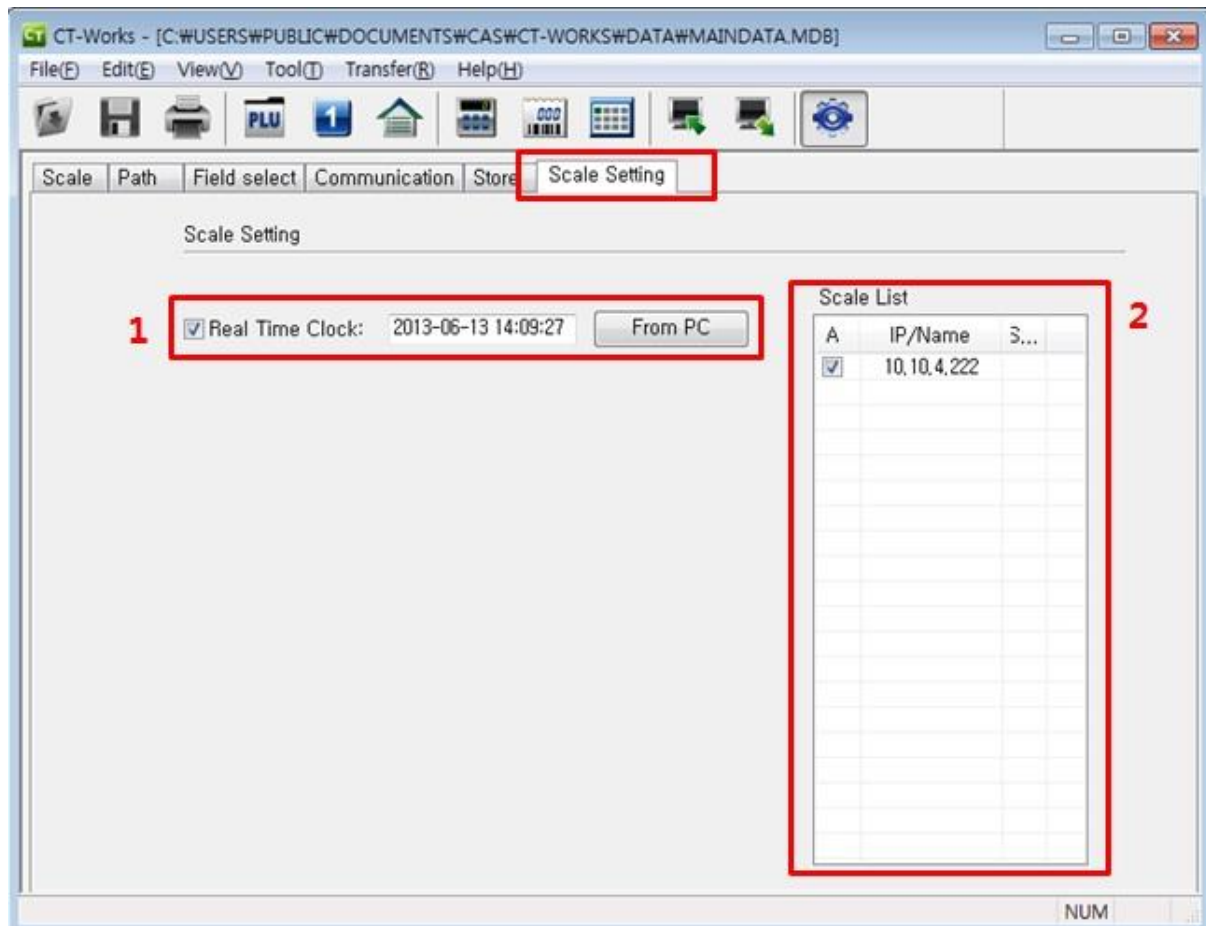


Image 2-10 Scale Setting

2.6.1. Scale Setting tab Explanation

1. Real time clock
You can change the CT100 time to connected computer time using synchronization.
2. Scale list
It shows the list of synchronization available scale

3. PLU editor

3.1. Basics of PLU editor

This feature makes user to manage PLU information. You can register PLU yourself or Import from editable programs like MS Excel file.

3.2. Components of PLU editor

Explain naming and PLU editor information.

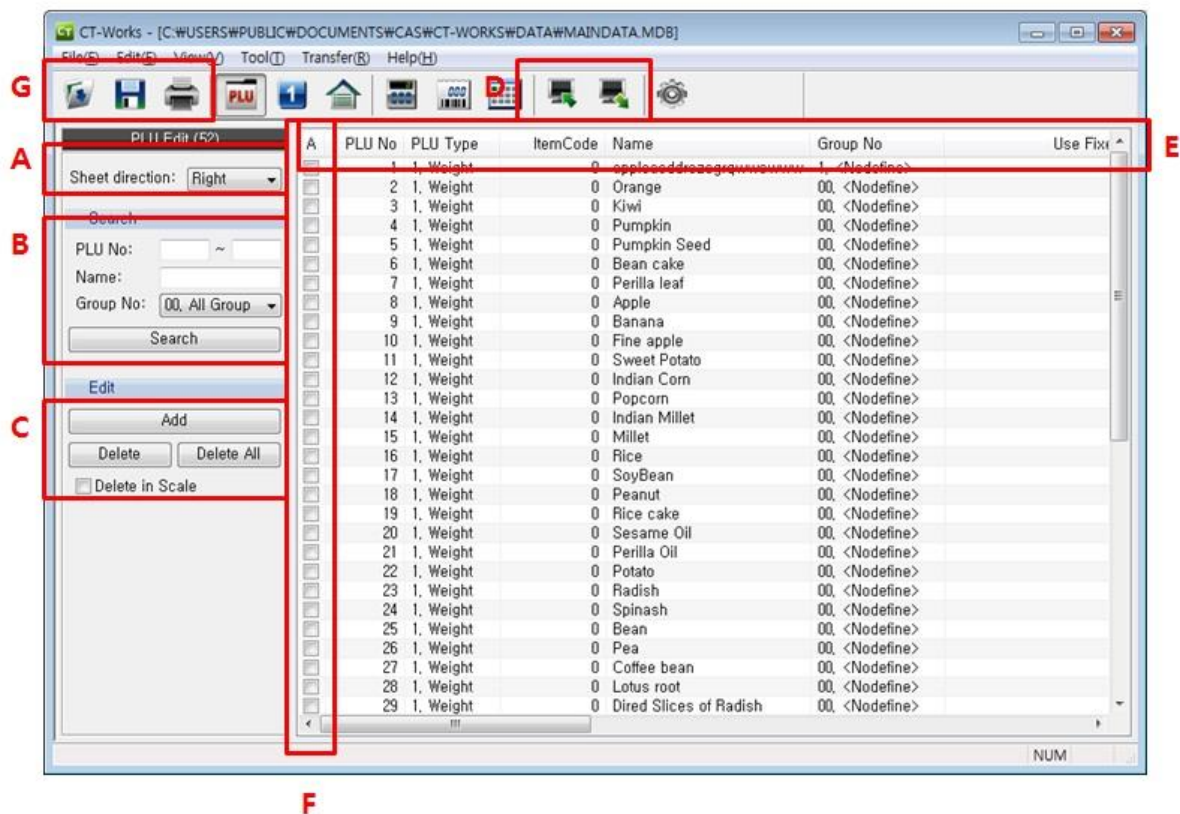


Image 3-1 PLU editor

3.2.1. Field explanation

1. Section A
 - A. Enter direction - It decides next direction also you can set grid setting condition.
2. Section B
 - A. PLU No – Input PLU No. area which you want to search
 - B. Name – Input PLU name which you want to search
 - C. Find PLU – Click the “Search” button to find PLU
 - D. More details look for the <3.3.2. Add & Edit in PLU edition>.

3. Section C
 - A. Add – Add PLU on default list
 - B. Delete – Delete selected PLU
 - C. Delete All – Delete All PLU
 - D. Delete in Scale – Delete PLU in scale
4. Section D
 - A. Upload – Click this button to get data from the scale
 - B. Download – Click this button to download data to scale
More details look for the <3.3.10.Downloading PLU>
5. Section E
 - A. Horizontal axis - Quick PLU list. Click name to line up
6. Section F
 - A. Column 'A' on the Vertical axis- PLU list
 - B. Choose any PLU you want
 - C. Press column 'A' to select all
7. Section G
 - A. First icon- Open saved data
 - B. Second icon- Save reformed data
 - C. Third icon- Print the data

3.3. Programming PLU editor

Explain every process needed in PLU editing

3.3.1. Opening new work in PLU editor

1. Run CT-Works program
2. Select file menu
3. Click "New" to prepare a new work

3.3.2. Add & edit in PLU editor

Explains add & edit PLU

1. Additional process
 - A. Press add PLU button on <Image 3-1. PLU editor> section C]
New data appears at the bottom of grid screen
 - B. Input information. More details look for <2. Correction> below
[Reference: PLU is up to 4000 unit]
2. Correction
 - A. Choose the item you want to correct and press Enter or double-click it

- B. It turns to editing input condition or list selected condition

[Reference: there is two type of editing condition. Write down directly or choose from the list. Items Table I need to make up the data list first.]

3.3.3. Save & open PLU data

Learn how to save, open, import and export PLU files.

3.3.4. Saving data

1. Click save icon on <Image 3-1 PLU editor> section G
[Reference: If display shows notice message. Click "OK" and fill up the rest of information]
 - A. Data is saved
[Reference: Saving refer to last open and saved file.]
2. Saving in new name
 - A. Select "File" in <Image 3-1.PLU editor>
 - B. Choose Save menu
 - C. Write new file name or select file to save
3. Opening data
 - A. Select "File" in <Image 3-1.PLU editor>
 - B. Choose Open menu
 - C. Write or select file to open
 - D. Press "OK" button
4. Exporting data
 - A. Select "File" in <Image 3-1.PLU editor>
 - B. Choose Export menu
 - C. Write or select file to export when dialogue appears
[Reference: It only saves same type of files]
 - D. Saving file is complete
5. Import data
CT-Works can import two file format types – Excel file format (.xls) and Text file format (.txt).
[Reference: Excel File Import<3.3.5.>]

3.3.5. Excel file Import

Possible file formats are the Excel file (xls) and the Test file (txt).

1. Select "File" in <Image 3-1.PLU editor>
2. Select "Import"

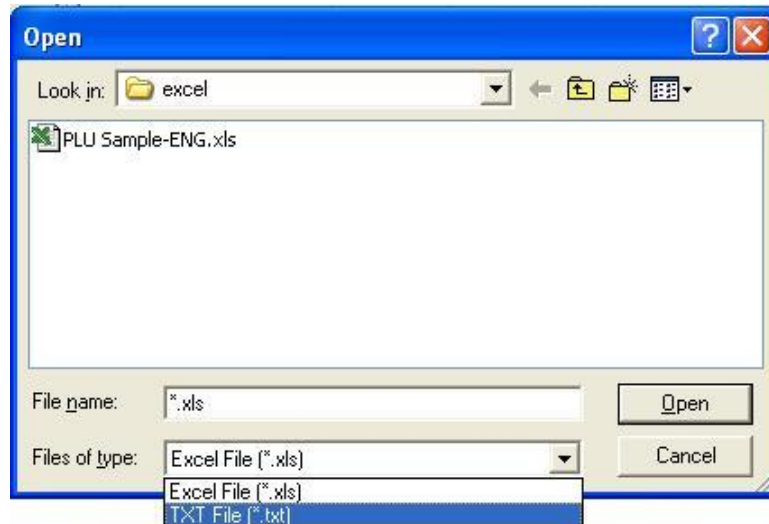


Image 3-2 Import - File open

3. Put the file name or select the Excel file to be imported <Image 3-2>

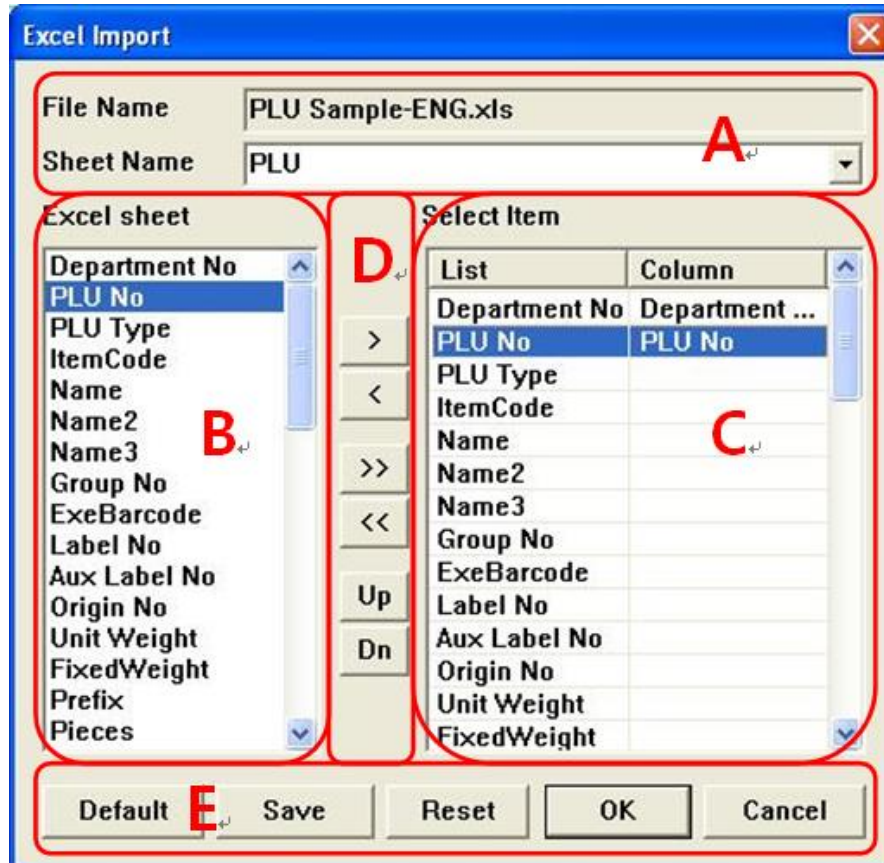


Image 3-3 Excel Import

4. Select the sheet to be imported when dialog appears <Image 3-3>
5. Connection composition of the columns of Excel file (B) with the columns of CT-Works(C)
When after selecting the two columns (form B and C items) to be connected and click '>' in D, the two items (column) will be connected.
 - A. '>' : Connect the selected columns
 - B. '<' : Cancel the connection of the selected columns
 - C. '>>' : Connect all columns
 - D. '<<' : Cancel the connection of all columns
 - E. 'Up' : Connect the upper column
 - F. 'Dn' : Connect the lower column
6. Connection Help Buttons
 - A. 'Default': If the file to be imported is the basic file format which is exported form CT-Works, it comes to be connected by a 'Default' composition'
 - B. 'Save': Save the current connection composition. It will be used in next import.
 - C. 'Reset': Cancel the current connection composition.
 - D. 'OK': Import file by the current connection composition.
 - E. 'Cancel': Cancel import.

3.3.6. Dealing with Enter in PLU editor

Explains how to manage Enter after input information on editor dialog

1. Select "None" in Enter Direction at < Image 3-1 > section A. It just completes the input.
2. Select Right in Enter Direction at < Image 3-1 > section A. It makes input complete and move to right column
3. Select Down in Enter Direction at < Image 3-1 > section A. It move to next line

3.3.8. Searching data

Explains how to find the data

1. Explain control
 - A. PLU number at <Image 3-1> section B: Input searching condition of the range of PLU number.
 - B. PLU Name at <Image 3-1> section B: Input PLU name which you want to find
2. Instruction
 - A. Check all the conditions above 1(Explain control). Click to find PLU button at <Image 3-1> section B. It show the PLU which satisfy the request.
[Reference: To see all PLU, Choose "00 All" in the "Group No" column and click "Search" button.]

3.3.9. Upload PLU

Explains to bring data from the scale

1. First, check communication cable is connected
2. Check communication setting is in order
3. Start program if above conditions are done
4. Click upload icon at <Image 3-1> section E
[Reference: You can press Cancel button to cancel it]
5. You can see the data from the scale on the screen

3.3.10. Downloading PLU

Explain how to download data to scale

1. First, check communication cable is connected
2. Check communication setting is in order
3. Start program if above conditions are done
4. Open or edit files which you want to download
5. Select PLU to download at <Image 3-1> section F
6. Click Download icon at <Image 3-1> section D
[Reference: You can press Cancel button to cancel it]
7. Click OK button to finish

3.3.11. Deleting PLU

Explaining how to delete PLU process

1. Delete one by one
 - A. Start program
 - B. Open or edit data
 - C. Check the PLU you want to delete at the check box at <Image 3-1> section G
 - D. Click Delete PLU button at <Image 3-1> section C
 - E. Deleting complete

[Reference: It's easy to find PLU using PLU search]
2. Delete scale PLU data only
 - A. Choose "Delete in Scale" check box at <PLU editor image 3-1> section C
 - B. Click Delete PLU button box at <PLU editor image 3-1> section C
 - C. Deleting scale data

[Reference: It deletes only scale data]
3. Deleting Department
 - A. Select Department you want to delete at <Image 3-1> section C in Dept No
 - B. Click "Delete" button at <Image 3-1> section C
 - C. Every PLU you choose in department deletes

No.	Type Name	Input area	Registered location
1	Department No.	99	Table I
2	PLU No.	999999	PLU Editor
3	PLU Type	4	PLU Editor
4	Name	40	PLU Editor
5	Price	999999	PLU Editor

4. Data Table 1

4.1. Data Table 1 formation

Data Table I is formed with Department, Group, Tax rate, Receipt message look like <Image 4-1> down below.

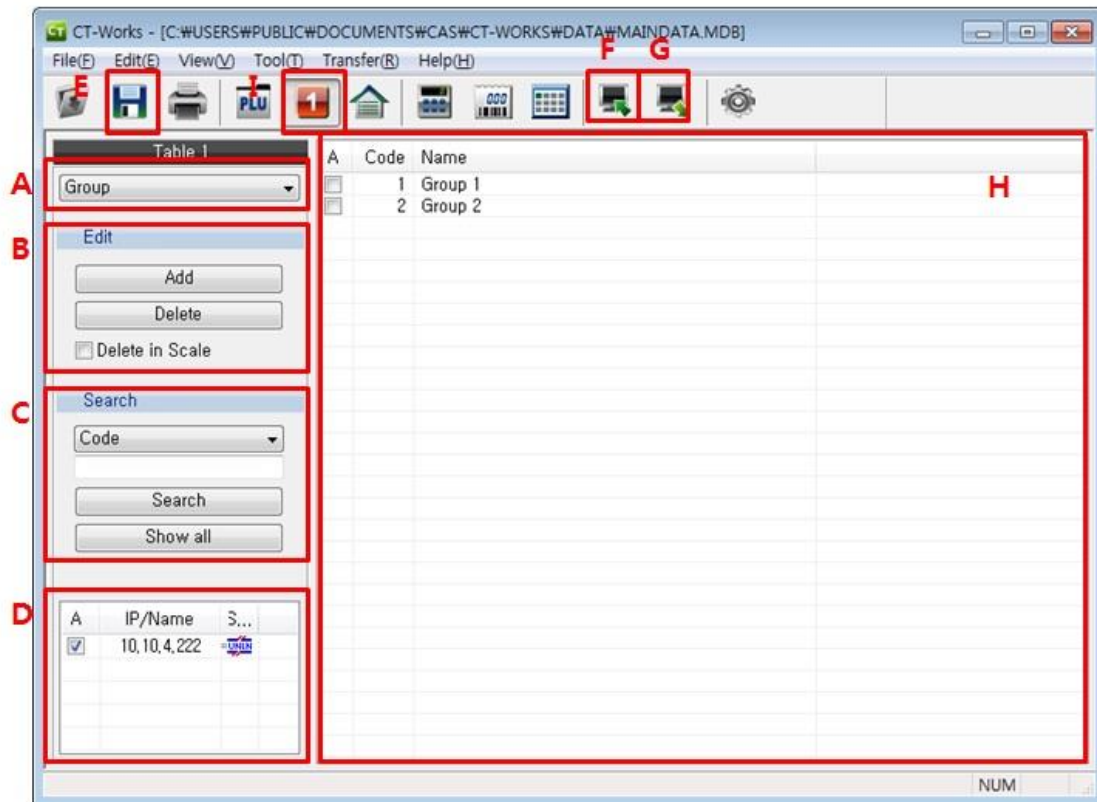


Image 4-1 Data table

4.1.1. Table 1 Explanation

1. Section A
 - A. It uses to choose among one of Group, Tax Rate, and receipt Message.
2. Section B
 - A. ADD - Starts adding process chosen in <Image 4-1> at section A
 - B. Delete – Use to delete contents in <Image 4-1> at section H
 - C. Delete in Scale – Delete contents on scale
 - D. If you press delete button when had checked on the check box. It deletes code which exists on scale. If not, it deletes editing dialog on screen
3. Section C
 - A. Search – Use to search data. Result will appear on display

- B. Show All - It is to see all the data again after finishing searching
NOTE: It will not show up when selecting Tax Rate
- 4. Section D
 - A. Status –It shows IP list and status when using TCP/IP network
NOTE: It will not show up when you set to serial communication
[Reference: You can download all the CT100 scales data to PC. However you can upload the scale data from only one scale to PC.]
- 5. Section D
 - A. Save –Use to save or register data
- 6. Section E
 - A. Upload –To bring data from scale to PC
- 7. Section F
 - A. Download –Use to download data from PC to scale
- 8. Section G
 - A. It shows selected content data on display. This editing dialog can register or edit data

4.2. Data Table 1 instruction

Explains all about editing Data Table I

4.2.1. Starting new work

To start new work, follow the instruction below

1. Select File in Menu
 2. Choose New
 3. Screen is ready for the new work
- NOTE: It only applies to select content at section A

4.2.2. Edit & Add

This chapter explains edit & adds data.

1. Adding process
 - A. Select contents you want to work on the menu
 - B. Click "Add" button on <Image 4-1> section B. New data will add in grid dialog below
 - C. Write detail information on data you want to add
2. Edit process
 - A. Select contents you want to edit and press Enter or double-click it
 - B. It turns to editing state like input state or choosing list state
 - C. When you finishing inputs, save the data

4.2.3. Save data

1. Finish adding data & editing
2. Click disk (save) icon on <Image 4-1> section E or click Save on File Menu
NOTE: If information is not in place, it will show caution message to fill in the data
3. If there is no caution message, saving is completed
NOTE: current data save in present database file. Check from File Path in configuration

4.2.4. Searching data

How to find the data you want

1. Instruction and control
 - A. Combo list on section C
It is the detail content lists of section A. Select the Filed you want to search
 - B. Searching dialog on section C
Insert keyword you want to search
 - C. Search button on section C
Results about searching keyword
NOTE: Use Enter key for searching result
[Reference: 'Show all' button will show the entire list on section H]

4.2.5. Delete data

Explains how to delete data

1. Delete the file on PC
 - A. Select contents you want to delete in <Image 4-1> section H
 - B. Click Delete button on <Image 4-1> section B
The "Delete in Scale" check box must not checked
 - C. Selected contents will delete and screen renews on <Image 4-1> section H.
2. Delete scale data
 - A. Choose the content you want to delete on <Image 4-1> section H
 - B. Check Delete in Scale check box
 - C. Click Delete button on <Image 4-1> section B
 - D. It will delete the data in scale if exist
[Reference: at least one contents is checked on <Image 4-1> section D, if you are using TCP/IP mode]

4.2.6. Upload data

This function explains how to upload data from the scale.

1. Upload instruction
 - A. Check conditions like communication mode, speed in setting communication in Configuration
 - [Reference: More details, check <2.4 Communication Configuration>]
 - B. Select contents you want to upload in <Image 4-1> at section A
 - C. Click download icon section G to start
 - D. Dialog box and upload status will shown in right condition

NOTE: must select only one when you using TPC/IP mode

4.2.7. Download

This function explains how to download present screen data to the scale.

1. How to download
 - A. Check all the conditions like mode, speed in Configuration communication setting
 - B. Select contents you want to download on
 - C. Click download icon on section G to start download
 - D. When it works right, you can see the downloading dialog / status

NOTE: TCP/IP mode. You must select at least one

4.3. Assist information on Data Table 1

4.3.1. Input filed table

<Image 4-1> shows each fields input area.

Table I property table, Table 4-1

Item	Filed name	Property	Status
Group	Code	1 ~ 99	Number
	Group Name	32	Character
Tax Rate	Code	1 ~ 8	Number
	Type	0 (Only)	Number
	Tax Rate (%)	0 ~ 9999	Number
Receipt Msg	Code	1 ~ 99	Number
	Receipt Message	1 ~ 12	Character

4.3.2. Precautions

1. choosing another content on <Image 4-1> at section A, will make save on memories but not in the file

Clicking Save icon will make all the memories to save in File. Before select the another content on <Image 4-1> at section A, make sure the job is right

2. You must check communication status between PC and scale before upload, download or delete data
3. There is two way to communicate with, serial communication and network communication. Serial connection is communicated with only one scale
It is to upload from one scale at the same time. So, must checked one scale on <Image 4-1> at section D
Data on present screen will disappear when starting upload. Save the job before upload

5. Store Data (PLU assist information III)

5.1. Store data formation

This program can register or edit information about Store Data, and User/Security. It looks like <Image 5-1> down below.

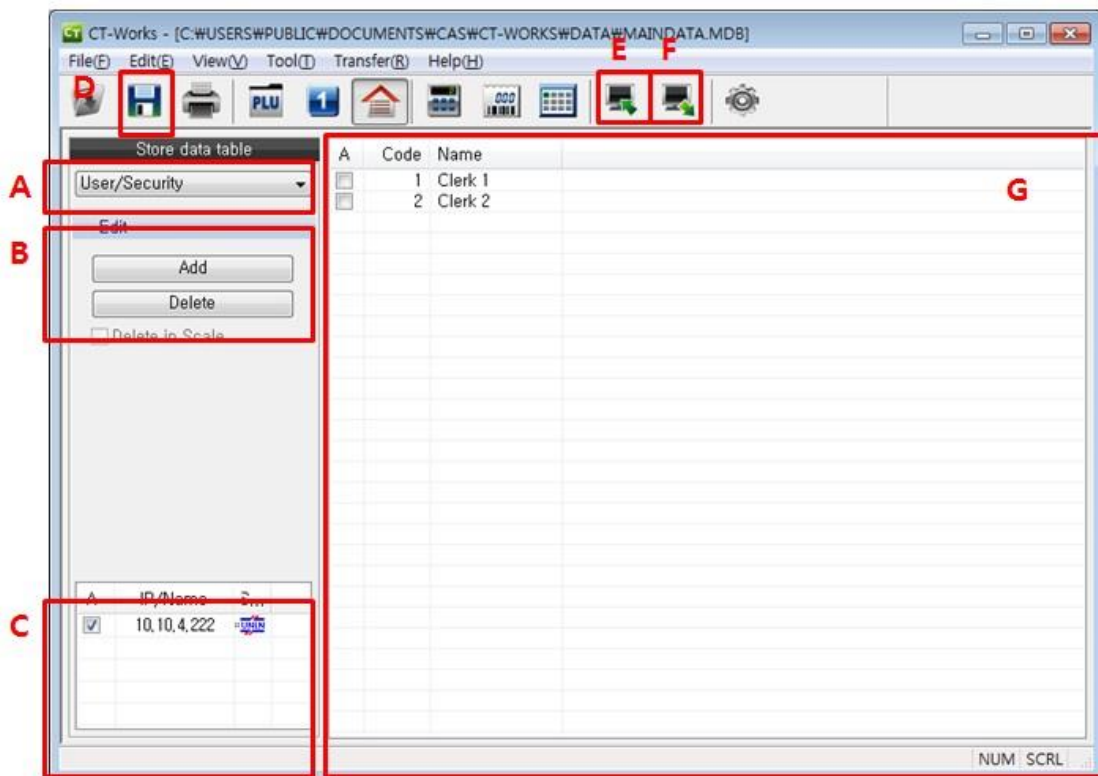


Image 5-1 Store Data

5.1.1. Explanation and name

1. Section A
It uses to choose among one of Store Data, Customer, Scroll Message, User/Security
2. Section B
 - A. ADD - Starts adding process chosen in <Image 5-1> at section A
 - B. Delete –Use to delete contents in <Image 5-1> at section G
3. Section C
It shows the list of IP on connected CT100.
4. Section D
Save –Use to save or register data

5. Section E
Upload –Use to bring data from scale to PC
6. Section F
Download –Use to download data from PC to scale
7. Section G
It shows selected content data. This editing dialog can register or edit data

5.2. Store Data instruction

5.2.1. Starting a new work

To start new work, follow the instruction below

1. Select File in Menu
2. Choose New
3. Screen is ready for the new work

5.2.2. Edit & Add

1. Add process
 - A. Select contents you want to work on in <Image 5-1> section A
 - B. Click ADD button. New data will add in grid dialog
 - C. Write detail information on data you want to add
2. Edit process
 - A. Select contents you want to edit and press Enter or double-click
 - B. It turns to editing state (input state or choosing list state)
 - C. The data is saved after finishing input the data.

5.2.3. Save

Explains about register or save edited data

1. Finish adding data & editing
2. Click D icon on <Image 5-1> or click Save on File Menu
[Reference: If basic information is not in place, it will not save. When caution message is appeared, checks the data and try again]
3. If no caution message is appeared, saving is completed
[Reference: Data is going to save in present database file. It can check from File Path in Configuration program]

5.2.4. Delete

Explains how to delete data

1. Delete the file on PC
 - A. Select contents you want to delete in <Image 5-1> at section G
 - B. Click Delete button on <Image 5-1> at section B
[Reference: "Delete in Scale" check box must not checked]
 - C. Selected contents will delete and screen renews on <Image 5-1> at section G

5.2.5. Upload data

Explains upload data from scale [Reference: PC and scale need to connect in first place]

1. Upload instruction
 - A. Check the scale is working right
Check conditions like communication mode, speed in setting communication in configuration
[Reference: More details look for the <2.4. Communication Configuration>]
 - B. Select contents you want to upload in <Image 5-1> at section A
 - C. Click icon on <Image 5-1> section E to start
 - D. Dialog box and upload status will shown in right condition
[Reference: Only one must selected when you using TPC/IP mode <Image 5-1> at section C]

5.2.6. Download data

Explains download present screen data to the scale. This function will work when PC and scale is connected

1. How to download
 - A. Check scale is working right
 - B. Check all the conditions like mode, speed in Configuration Communication setting
[Reference: More details look for the <2.4. Communication Configuration>]
 - C. Select contents you want to download on <Image 5-1> at section A
 - D. Click icon on <Image 5-1> at section F to start download
 - E. When it works right, you can see the downloading dialog and status
[Reference: When you using the TCP/IP mode. You must select at least one on <Image 5-1> at section C]

5.3. Store Data assist information

Explains characteristic of each data in <Image 5-1> and precautions

5.3.1. Property table

<Store Data, Image 5-1> shows each fields input property. You cannot overwrite when you add or edit data

Store Data Input property table, Table 5-1

Item	Field name	Property	Status
User/Security	No.	1 ~ 95	Number
	Name	24	Character
	Nick name	8	Character
	Password	8	Character
	Level	0 ~ 3	Number

5.3.2. Precautions

1. Choosing another content on <Image 5-1> at section A, will make save on memories but not in the file
Clicking Save icon will make all the memories to save in file. Before select the another content on <Image 5-1> at section A, make sure the job is right
2. You must check communication status between PC and scale before upload, download or delete data
3. There is two way to communicate with, serial communication and network communication.
Serial is fixed to one scale
It can upload from one scale at the same time. When you using network communication, only one scale must selected at <Image 5-1>
Data on present screen will disappear when starting upload. Do save the job before upload

6. Report

6.1. Outline

This chapter explains seeing reports about sales data information which saved in scale. This report is in PC and indicates newly update data from the scale

6.2. Formation

You can use to click Report on main toolbar and it will show up like <Image 6-1> below

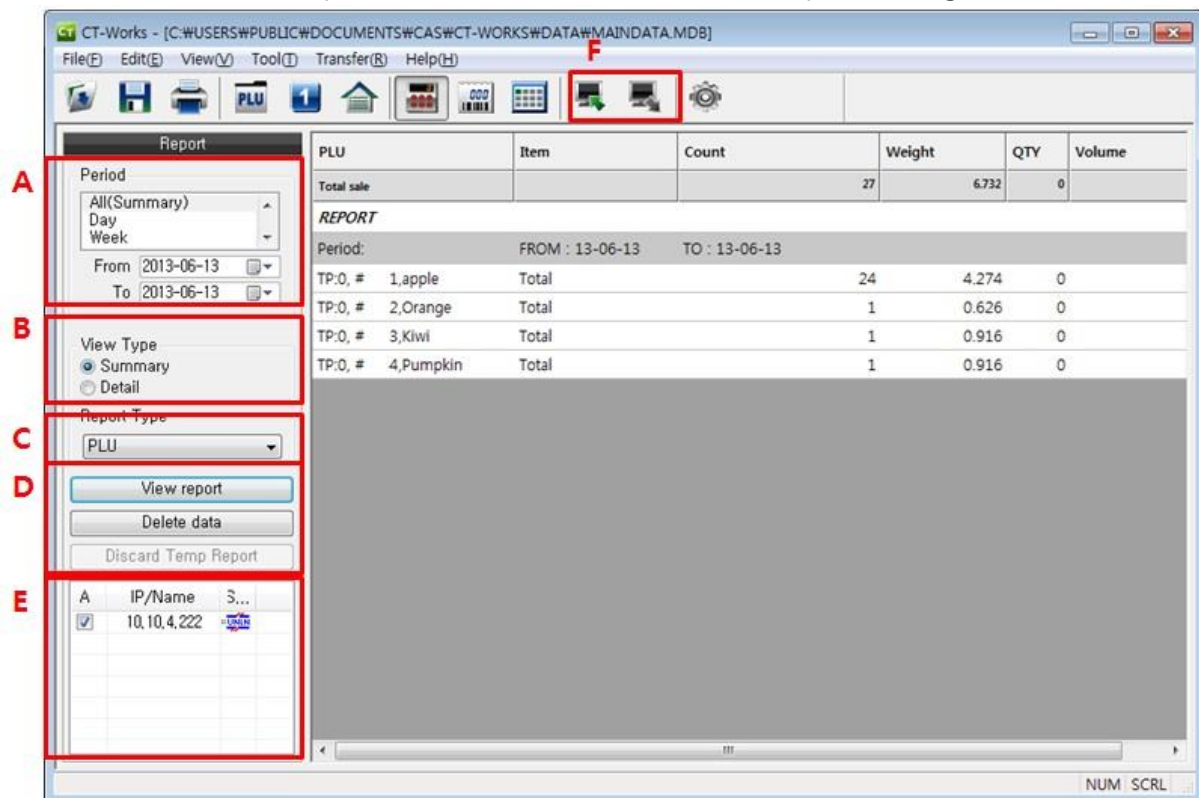


Image 6-1 Report

You can select the contents you want to see in <Image 6-1>. <6.3.1.Start seeing report> explains seeing report contents

You can see the <Image 6-2> when you click Delete Data at <Image 6-1> section D. Be careful when you delete the data, it cannot recall the data once deleted

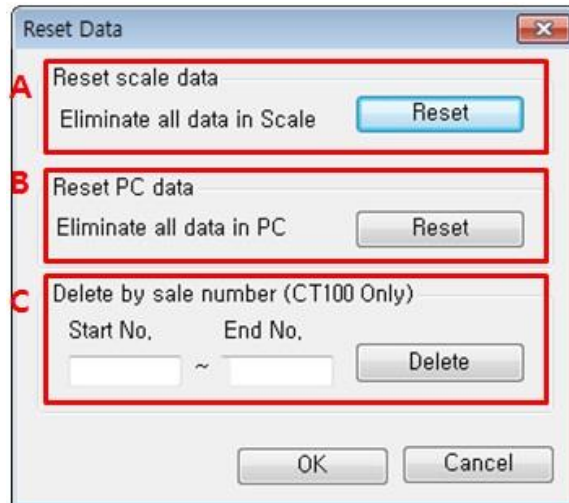


Image 6-2 Delete dialog

6.2.1. Names and Explanation

1. Normal screen

A. <Image 6-1> section A

- Select the period of the report you want to see

B. <Image 6-1> section B

- This section decides how to see the report
- Scale data contents has maximum 64 data file, so it is hard to find the data you want.
- Summary: It shows only total transaction.
- Detail: It shows detail transaction information such as Label print, Prepack, and Tax.

C. <Image 6-1> section C

It shows report type.

- PLU – It shows the statistics of the sell by PLU
- Group –It shows the statistics of the sell by PLU Group
- Time –It shows hourly statistics of sales
- Weekly –It shows the statistics by day of the week
- Monthly - It shows monthly statistics of sales
- Clerk –It shows each clerk's of the sell statistics
- Tax rate – It shows the statistics of the tax rate
- Total – It shows all the information on the report

D. <Image 6-1> Section D

View Report - Use to see reports

- It shows the report which set data in <Image 6-1> section A & decide in

<Image 6-1> section B

- It might take long time to get report if you set up Detail in <Image 6-1> section B

Delete Data –It use to delete data

- <Image 6-1> will show up by clicking button. It can delete data saved in PC or Scale

Discard Temp Report

- Delete the temporary report just uploaded.

E. <Image 6-1> Section F

- Upload –It uploads data from scale to PC.

2. Delete Data

A. <Image 6-2> section A

- Delete saved data in scale
- Sales information saved on scale will delete by press Reset
- Be careful to delete data by mistake

B. <Image 6-2> section B

- Delete saved data in PC
- Sales information saved on PC will delete by press Reset
- It cannot recall the deleted data

C. <Image 6-2> section C

- Delete selected saved data in the scale. (You can delete selected data by range of number)
- Saved sales information on the scale will delete by press Reset button.
- Be careful to delete data by mistake.

6.3. Instruction

It is made to see the report of contents statistical information which of the sell on scale. It cannot edit or download data

6.3.1. Start seeing report

Start by clicking Report at toolbar or Tool->Report in menu

To see reports follow the down below

1. Select period

- A. To select the date, choose date at <Image 6-1>. CT-Works set the date based on year-month-date. If you want to change, go to <2.1.Scale Configuration>. After you change date form, input need to follow the form
- B. It uses 2 units form in year. For example, if you want to see the statistics between 01-

01-2004 ~ 12-30-2004, input 04-01-01 and 04-12-31

- C. If you puts wrong period or puts 00-00-00 in blank, it prints every statistically saved data.

2. Select View type

- A. Depends on reports, It had many information on one sales information
- B. For example, Scale information shows maximum 64 data on each scale, it is hard to see.
- C. To solve this problem, this function use to view simple information user want to see

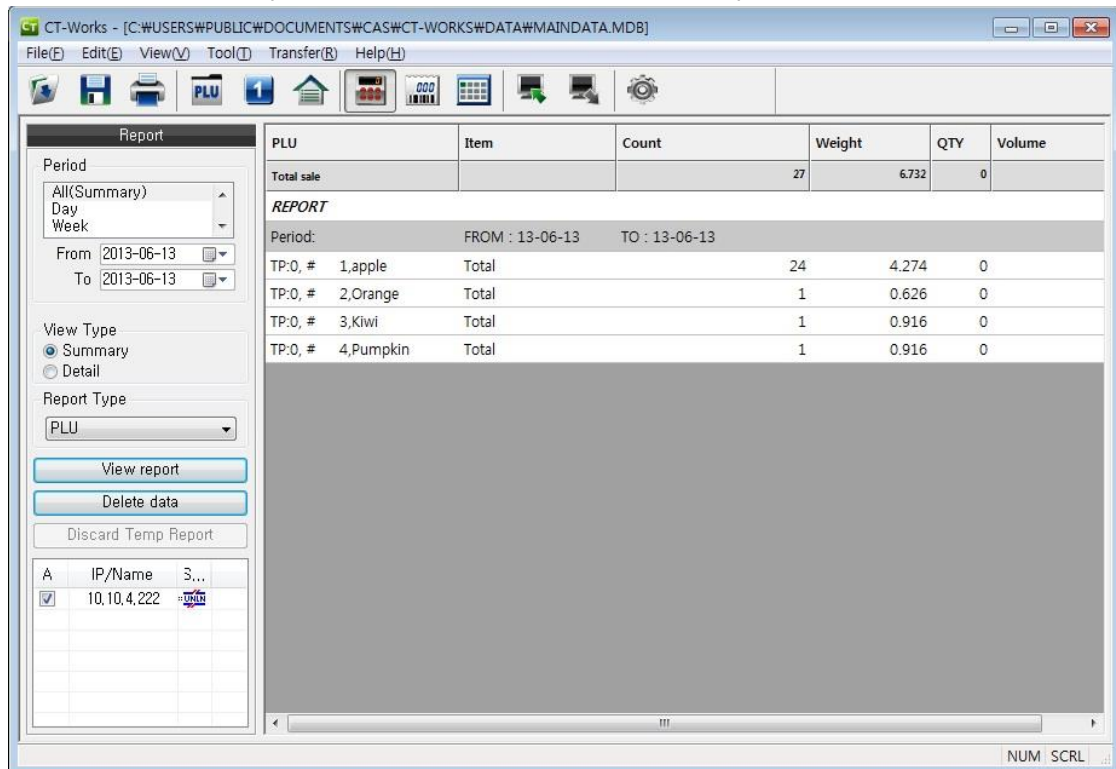


Image 6-3 Simple View

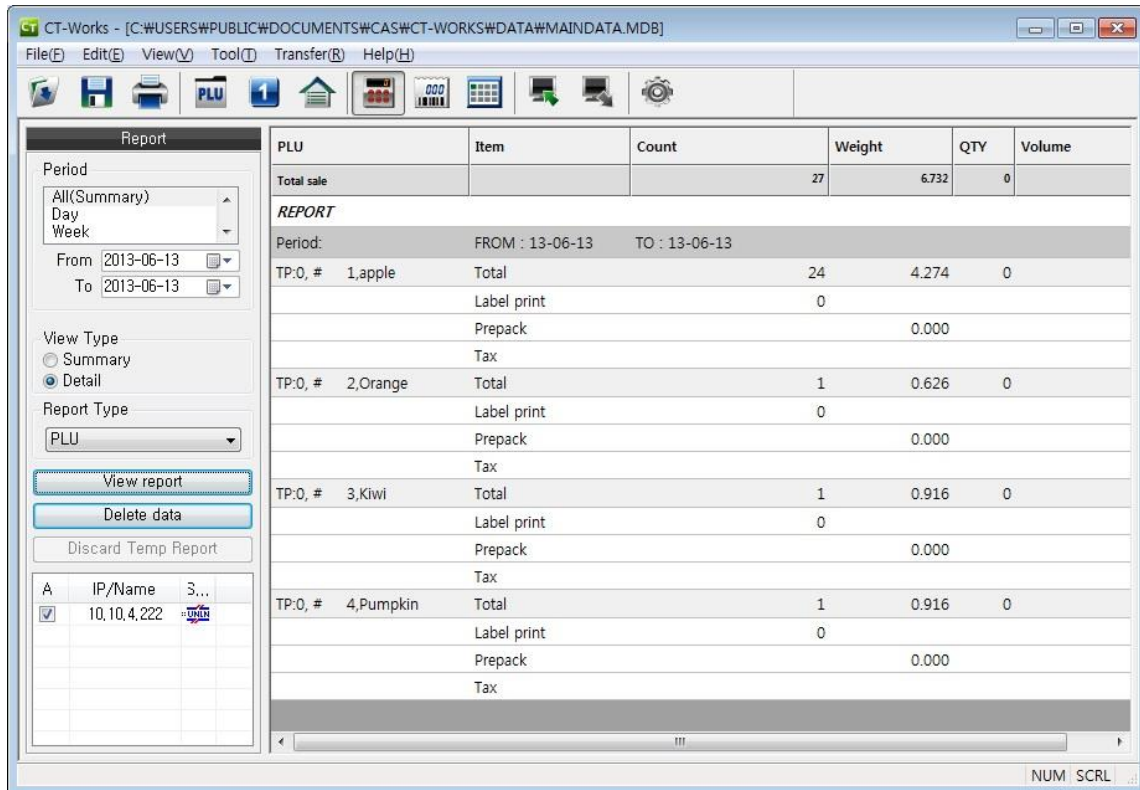


Image 6-4 View detail

3. You can print it by select View Report at <Image 6-1>

6.3.2. Edit view report

It do not support edit data in view report

6.3.3. Save view report

It saves in PC database automatically even you don't press save button

6.3.4. Upload data

Explains upload data from scale

[Reference: PC and scale need to connect in first place]

1. Upload (Upload instruction)
 - A. Check the scale is working right
 - B. Check conditions like communication mode, speed in <2.1.Scale Configuration>
 - C. Click icon on <Image 6-1> section F
 - D. Dialog box and upload status will shown in right condition
[Reference: Only one must selected when you using TPC/IP mode <Image 6-1> at section E]

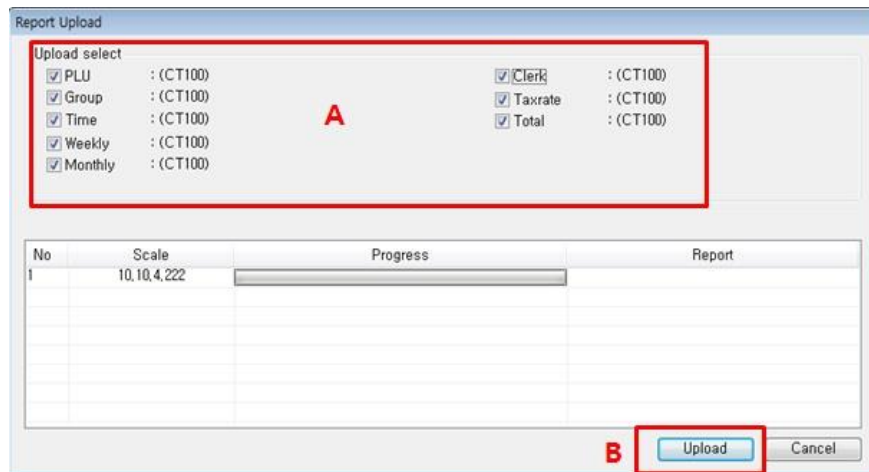


Image 6-5 Report upload

E. Select report types you want upload in section A at <Image 6-5>

F. Click the Upload button to start

When the new report data is uploaded, you can see the report title as "Temporary Report". This "Temporary Report" means that the uploaded report is not saved to the main report DB yet. Therefore, if you want to save this temporary report, click "Save" button. Otherwise, if you don't want to save it, click "Discard Temp. "Report" button.

6.3.5. Download data

It is read only. It do not support download data to scale

6.4. View Report reference

Explains characteristic of each data in <Image 6-1> and precautions

6.4.1. Input property table

Showing each fields input property. You cannot overwrite when you add or edit data

Table 6 1 Report field

Item	Name	Explaining	Status
PLU	PLU	PLU No	
	Item	Sales history	
	Count	Aggregate unit	
	Weight	Aggregate weight	
	Qty	Aggregate quantity	
	Volume	Aggregate volume	

Group	Group	Group No	
	Item	Sales history	
	Count	Aggregate unit	
	Weight	Aggregate weight	
	Qty	Aggregate quantity	
	Volume	Aggregate volume	
Time	Hourly	Hourly condition	
	Item	Sales history	
	Count	Aggregate unit	
	Weight	Aggregate weight	
	Qty	Aggregate quantity	
	Volume	Aggregate volume	
Weekly	Day of week	Day of week condition	
	Item	Sales history	
	Count	Aggregate unit	
	Weight	Aggregate weight	
	Qty	Aggregate quantity	
Monthly	Month	Month condition	
	Item	Sales history	
	Count	Aggregate unit	
	Weight	Aggregate weight	
	Qty	Aggregate quantity	
Clerk	Volume	Aggregate volume	
	Item	Sales history	
	Count	Aggregate unit	
	Weight	Aggregate weight	
	Qty	Aggregate quantity	
	Volume	Aggregate volume	
Tax rate	Tax	Tax	
	Item	Sales history	
	%	Aggregate unit percentage	
	Volume	Aggregate volume	
Total	Total		

	Item	Sales history	
	Count	Aggregate unit	
	Weight	Aggregate weight	
	QTY	Aggregate quantity	
	Volume	Aggregate volume	

7. Receipt

7.1. Outline

This chapter explains about receipt editor.

7.2. Formation

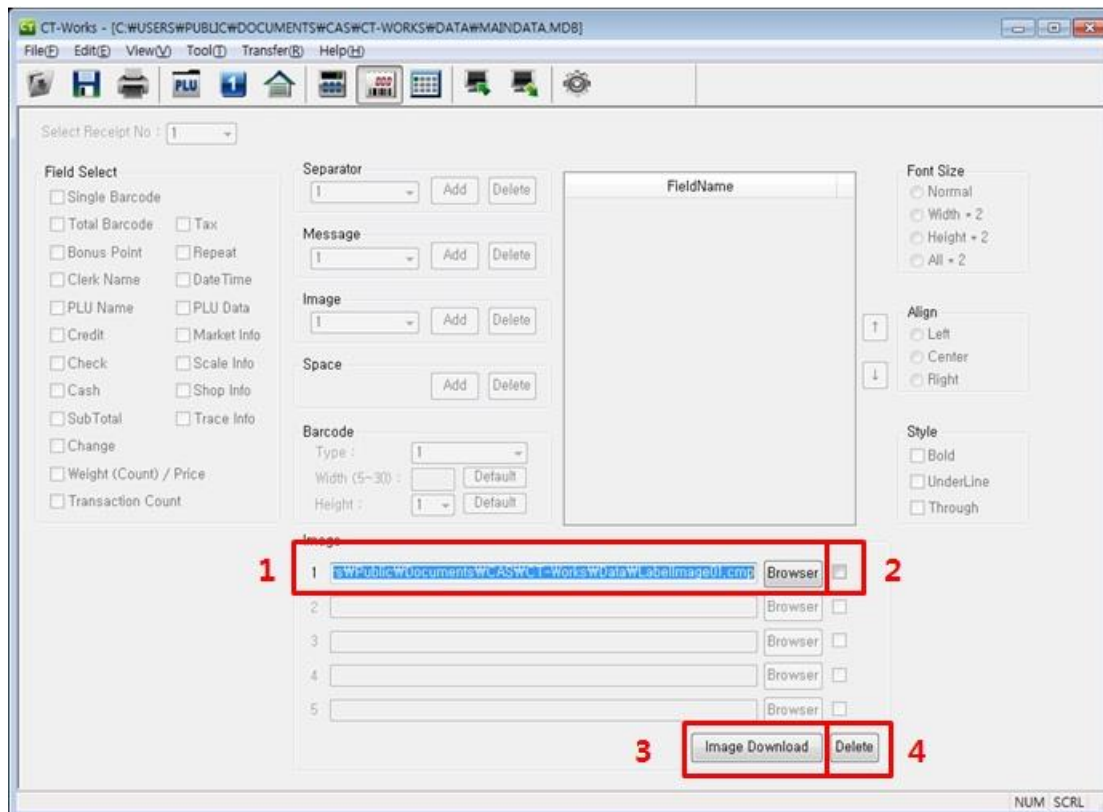


Image 7-1 Receipt

7.2.1. Explanation

1. Click the Browser button to select and edit the images which the user wants to transfer to the applicable scale.
2. Click this box to transfer the image to the scale.
3. The image will be transfer to the scale by clicking Image Download button.
4. Erase the image in the PC which the user selected and edited in '1'.
 - The image in the scale will not be erased

7.3. Add Image Item

7.3.1. Add Image Item

1. Executed a image browser

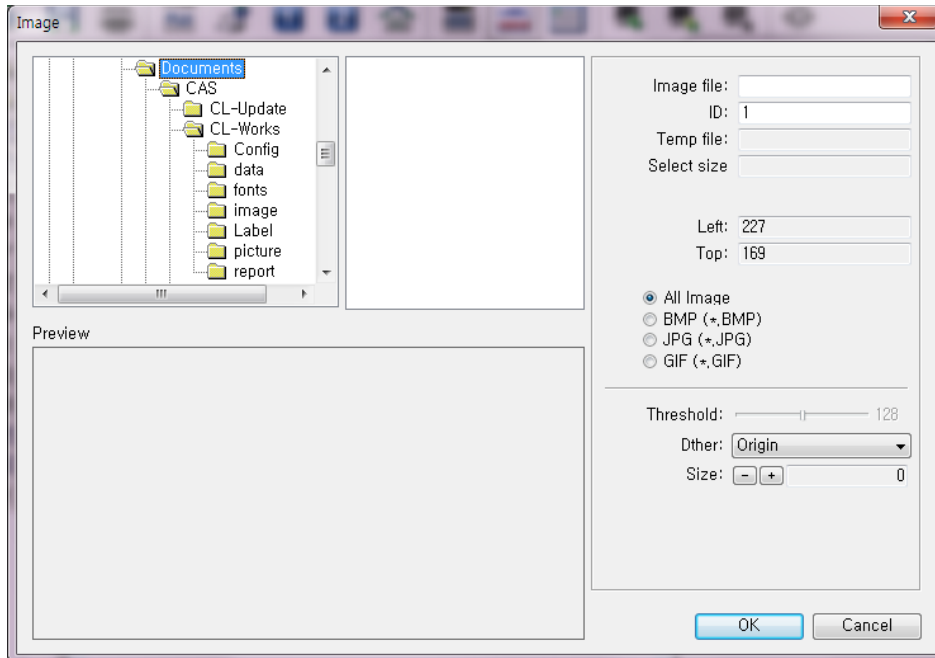


Image 7-2 Add Image Step 1

2. Find the picture folder as shown below.

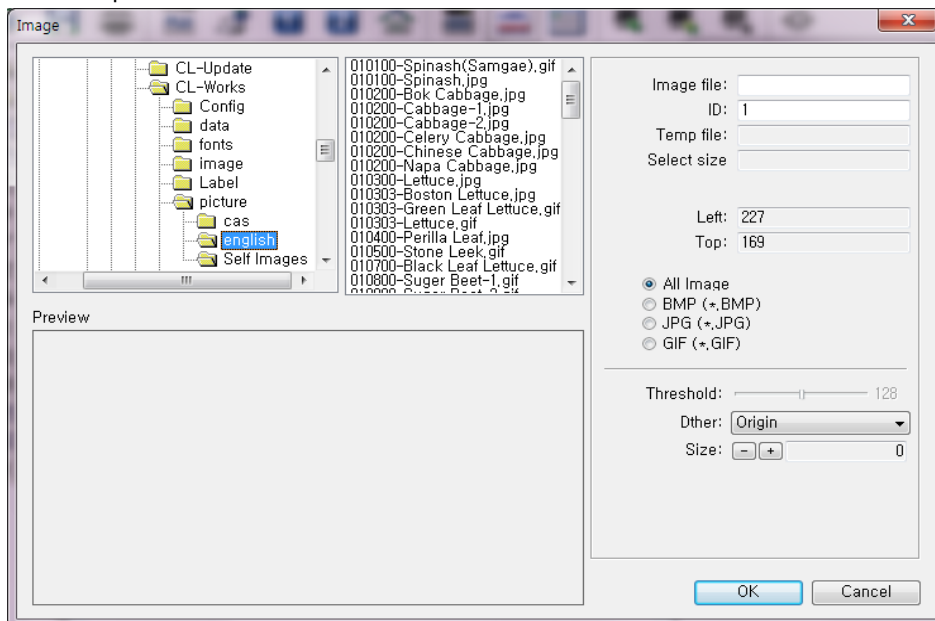


Image 7-3 Add Image Step 2

3. Selecting the image which you want to insert.

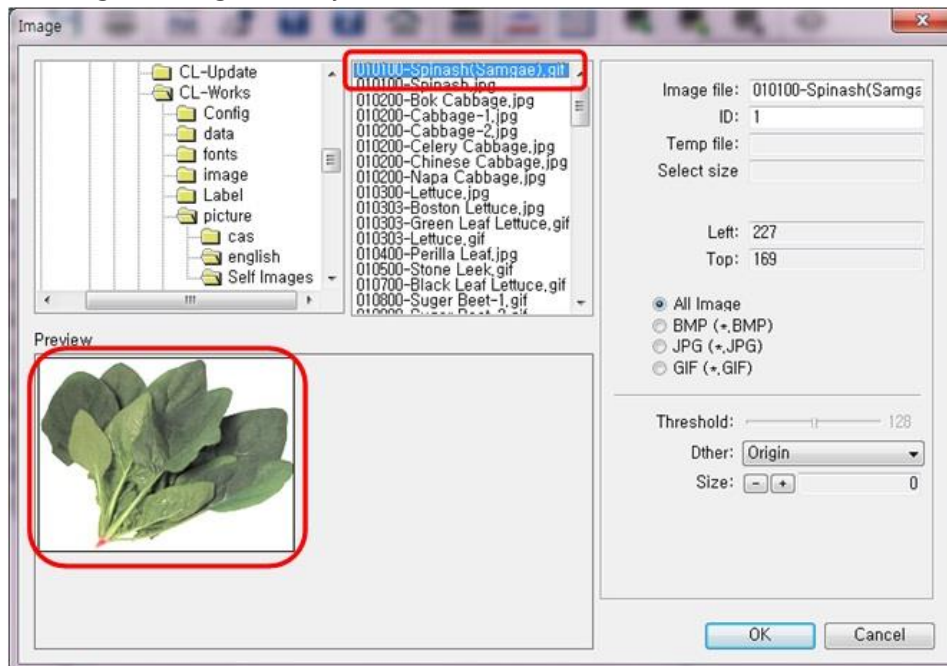


Image 7-4 Add Image Step 3

4. If the image is color, it cannot be inserted, so change to monochrome type as selecting **Floyd & Steinberg** or etc in the **Dither** menu(the right bottom)

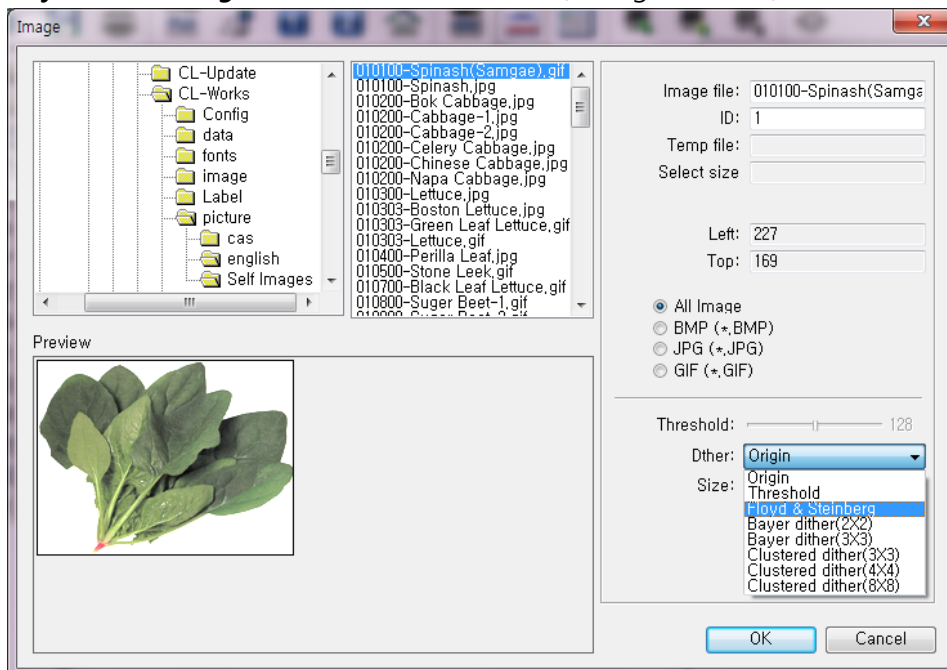


Image 7-5 Add Image Step 4-1

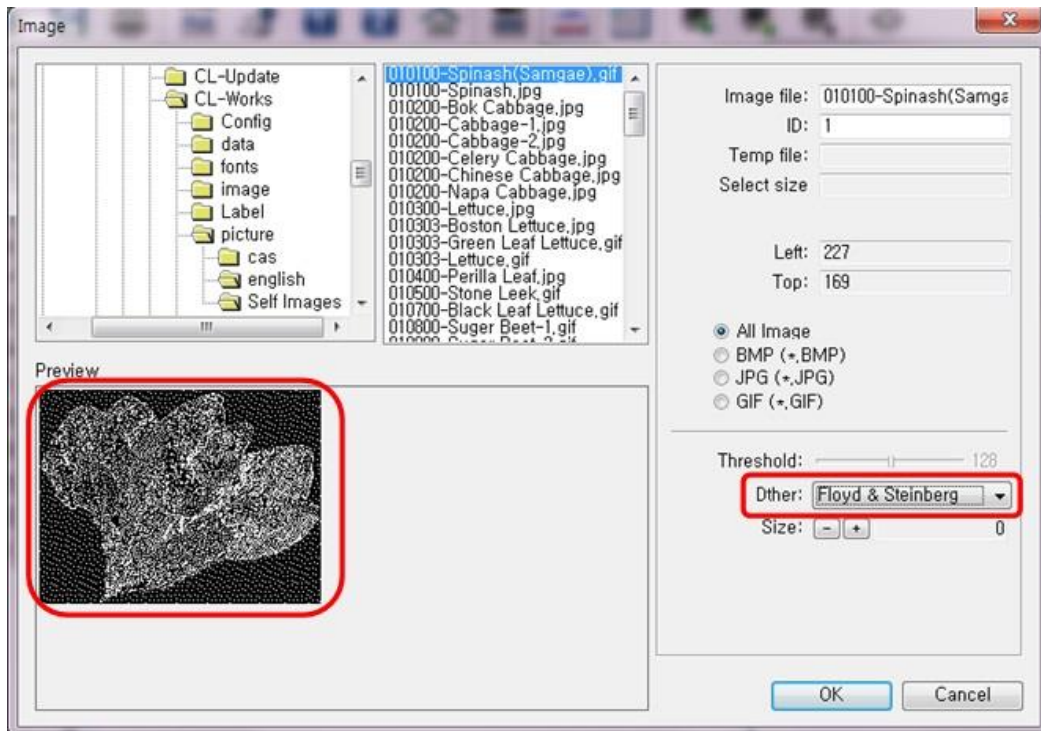


Image 7-6 Add Image Step 4-2

5. Click the OK button

7.3.2. Caution

1. Caution
 - 1) If the user select the image when the image already selected, warning message appears as shown below.

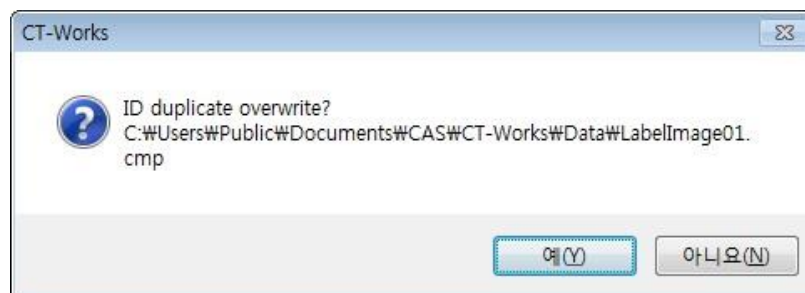


Image 7-7 ID Overwrite Message

8. Keypad

8.1. Outline

Key pad editor can edit and print the key pad on scale to use easily. It is not only edit key pad on screen, but makes each button to operate you want

8.2. Formation

It is largely separated with two parts. One which shows the data information and the other is showing shape of keypad.

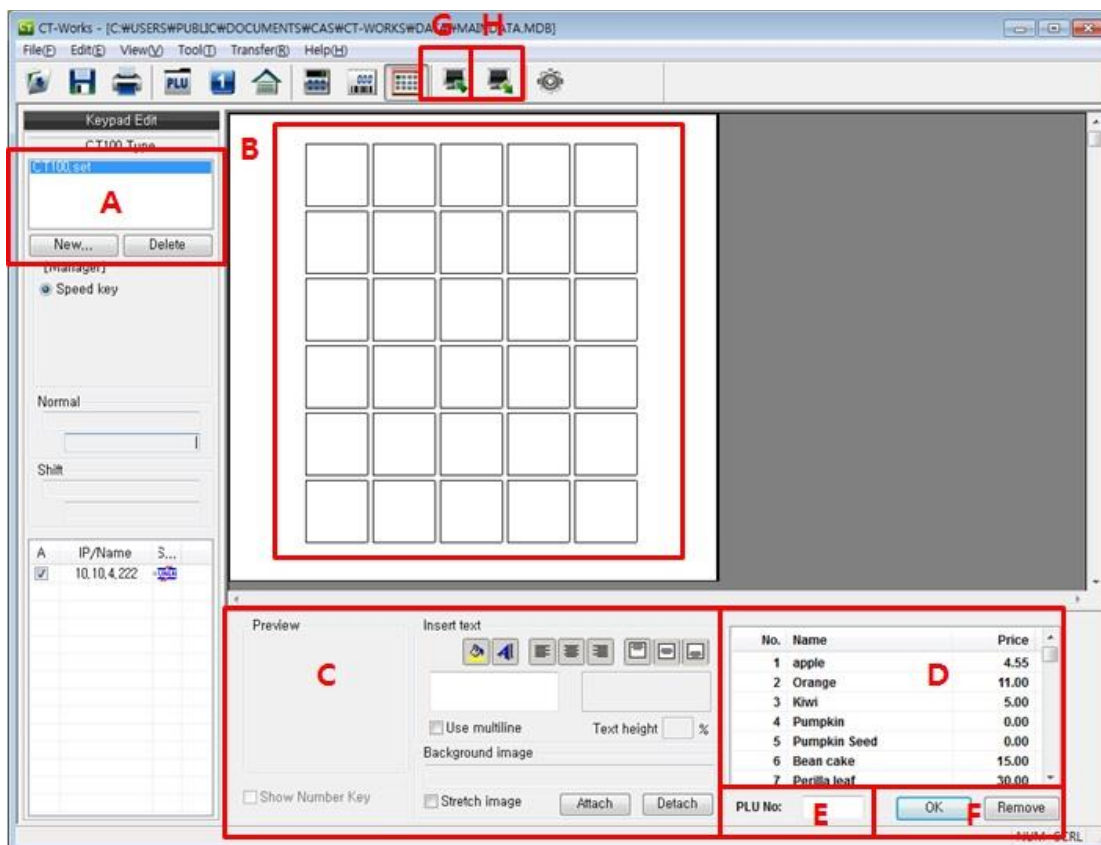


Image 8-1 Keypad editor

8.2.1. Explanation

1. Section A
It shows the generated key set.
2. Section B
This part is to edit on keypad editor module. It will print as same as on screen and

allocated PLU call out key or function key to every key

3. Section C

This part is to edit the Key<8.2.2 Edit print screen>

4. Section D

It lists the PLU or functions and selects the PLU or functions which to be assigned to the keys

5. Section E

It helps to assign PLUs to key easily by the PLU numbers.

6. Section F

Buttons

- Apply: Apply the edited items to the key.
- Remove: Remove the applied items from the key

8.2.2. Edit print screen

It shows keypad editor.

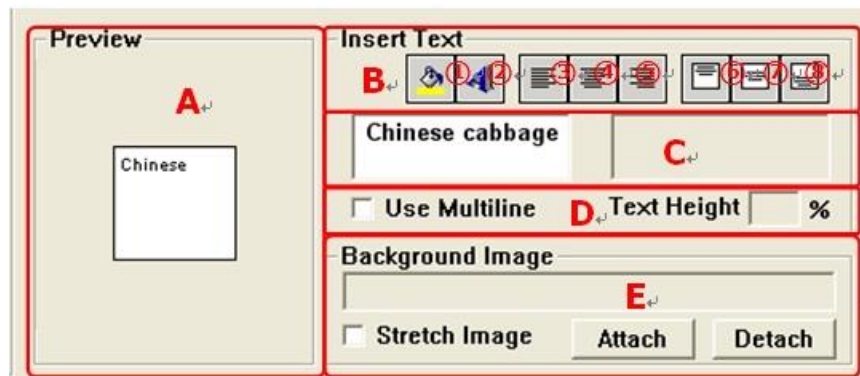


Image 8-2 edit keypad

1. Section A

It is preview screen. It shows how things will look like set on right panel C & D

2. Section B

It is toolbar for editor. It can edit font and each keys paragraph

- ① It sets background color
- ② It sets key font
- ③ It sets line to the left
- ④ It sets line to the middle
- ⑤ It sets line to the right
- ⑥ It sets line to the top
- ⑦ It sets line to the center
- ⑧ It sets line to the bottom

3. Section C

Edit key content. It can separate a Key to two circuit and able to control ratio of each part

4. Section D

It decides whether to separate a key to two circuit. Default value is 50%

5. Section E

A. It can put image on key background. It supports Bmp, jpg, png, gif files

B. Press Attach to select and input image

C. Press Detach to remove image file

D. Check Stretch Image to auto resize the image size if image is not fit with the key size

8.2.3. Edit speed key

PLU are listed in D of <Image 8-1>. It will select the PLU which has become the list in each key and it will be able to apply.

8.2.4. Make new file

If you want to make a file, select File->New. You can see the same screen like <Image 8-3>.

1. Select CT100 type.
2. Input a file name and a description

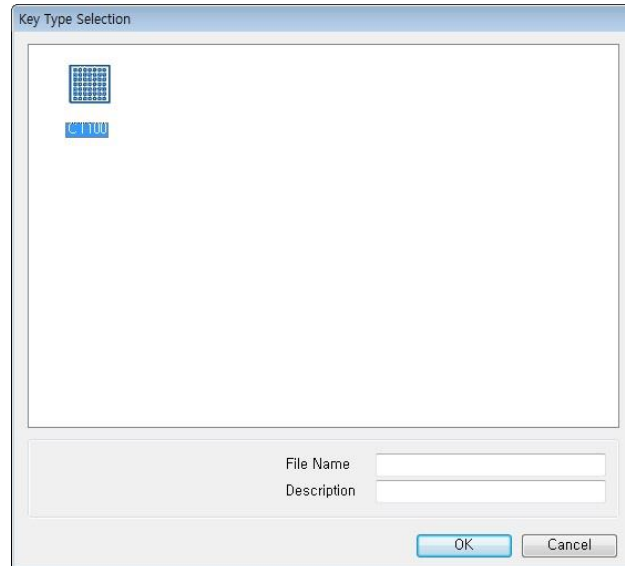


Image 8-3 Make new file

8.2.5. Save data

Explains about register or save edited data

1. Finish add or edit process

2. Click Save on file menu
[Reference: If leading data is not in place, it will not save the data. In this situation the caution message will appear. Check the data and retry]
3. When there is no caution message on screen, it saved the data

8.2.6. Delete file

Click Delete on <Image 8-1> part A to delete saved file

8.2.7. Upload data

Explains upload data from scale [Reference: PC and scale need to connect in first place]

1. Upload instruction
 - A. Check the scale is working right
 - B. Check all the conditions such as mode, speed in Configuration Communication setting
[Reference: Check the <2.4. Communication Configuration> for more detail]
 - A. Click Edit function key icon on <Image 8-1> part G to start.
 - B. Dialog box and upload status will shown in right condition
[Reference: Only one scale must selected when you using TPC/IP mode]

8.2.8. Download data

Explains download present screen data to the scale. This function will work when PC and scale is connected

1. Upload instruction
 - A. Check the scale is working right
 - B. Check all the conditions such as mode, speed in Configuration Communication setting
[Reference: check the <2.4. Communication Configuration> for more detail]
 - C. Click icon on <Image 8-1> at section H to start download
 - D. When it works right, you can see the downloading dialog and status
[Reference: When you using the TCP/IP mode. You must select at least one scale]