

ADSB LOAD CELL

Double Ended Shear Beam Load Cell

Suitable for electronic platform scale, truck scale and other electronic weighing devices.

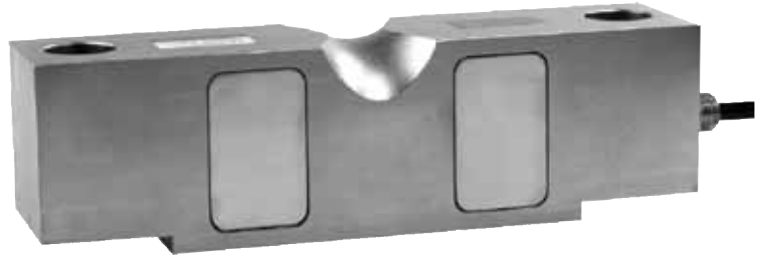


Features

- ADSB Load cells are available in the capacities 25Klb to 75Klb.
- Alloy steel construction, nickel plated, potted by adhesive inside, oil-proof, waterproof (IP67) and anti-corrosion, suitable for multiform environments.
- High accuracy
- Easy installation and reliable performance



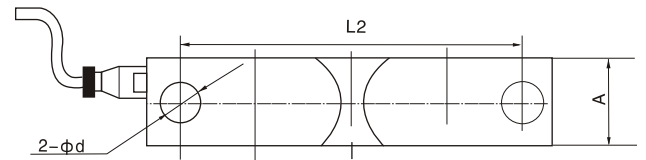
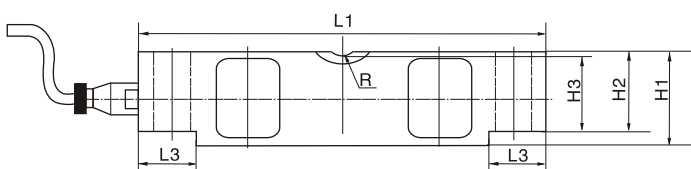
ADSB Load Cell Double Ended Shear Beam



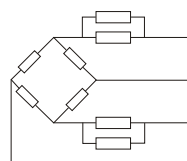
Specifications

Capacity	Klb	25/50/75
Accuracy class		C3
Maximum number of verification intervals	n_{max}	3000
Minimum load cell verification interval	V_{min}	$E_{max}/15000$
Combined error	(%FS)	$\leq \pm 0.023$
Creep	(%FS/30min)	$\leq \pm 0.014$
Temperature effect on sensitivity	(%FS/10°C)	$\leq \pm 0.010$
Temperature effect on zero	(%FS/10°C)	$\leq \pm 0.013$
Output sensitivity	(mv/v)	3.0 ± 0.003
Input resistance	(Ω)	700 ± 7
Output resistance	(Ω)	703 ± 4
Insulation resistance	(M Ω)	≥ 5000 (50VDC)
Zero balance	(%FS)	1.0
Temperature, compensated	(°C)	-10~+40
Temperature, operating	(°C)	-35~+65
Excitation, recommended	(V)	5~12(DC)
Excitation, max	(V)	18(DC)
Safe overload	(%FS)	120
Ultimate overload	(%FS)	150

Outline Dimension mm(inch)



Dimension	L1	L2	L3	H1	H2	H3	A	ϕd	R
Capacity									
25	197 (7.75)	165 (6.5)	35 (1.38)	49.3 (1.94)	43.2 (1.7)	41.4 (1.63)	43 (1.7)	17.3 (0.68)	19.1 (0.75)
50 - 75	260.4 (10.25)	216 (8.5)	49 (1.93)	74.7 (2.94)	67.3 (2.65)	64.5 (2.54)	62 (2.44)	26.9 (1.06)	25.4 (1)



Input (+): Red

Output (-): White

Input (-): Black

Output (+): Green

Wiring:

- Shielded, 4 conductor cable.
- Standard cable length: 9m.
- Cable type and cable length for customer's own application are available on request.